

# 33.6 HP (25 KW) H&S PARALLEL USED GEAR REDUCER / SPEED REDUCER / GEARBOX

MANUFACTURER: HORSBURG & SCOTT

HP RATING: 33.6

(25 KW)

INPUT RPM: 1750

RATIO: 76.3:1

REDUCTION: TRIPLE

SERVICE FACTOR: 1.64

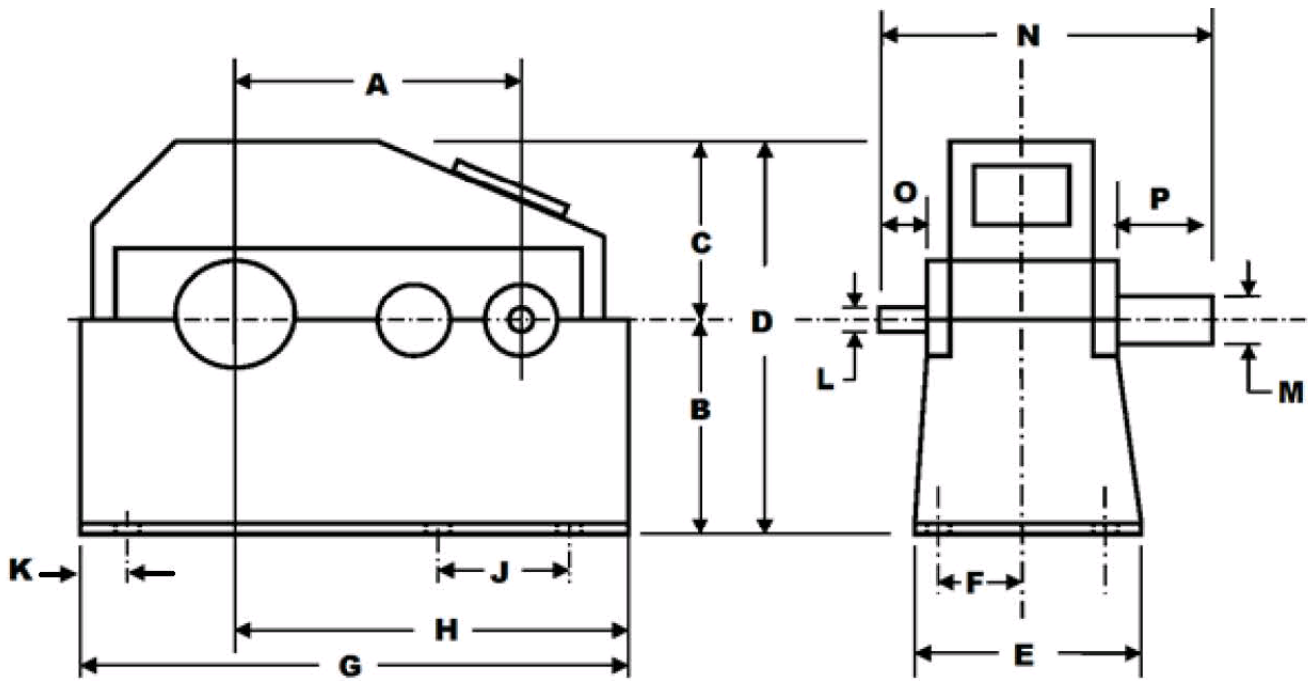
TYPE: PARALLEL

GEAR TYPE: HELICAL

BEARING TYPE: ROLLER

WEIGHT: 1980 LBS.

(898 KG)



A=25"

E=25.5"

J=16"

N=37.5"

B=15.5"

F=11.25"

K=4.25"

O=3"

C=10"

G=36"

L=1.125"

P=9"

D=25.5"

H=23.5"

M=4.25"

INVENTORY ID: 200796-000-00

**CASEYUSA®**

Revised 2/24/21

Page 1 of 1

**CASEY**

275 Kappa Drive, Pittsburgh, PA 15238

Ph: (800) 882-7000 • (412) 963-1111

Fax: (412) 963-0378

E-mail: [mechanicalsales@caseyusa.com](mailto:mechanicalsales@caseyusa.com)

Web: [www.caseyusa.com](http://www.caseyusa.com)