

# 37 HP (27 KW) HORSBURGH & SCOTT WD4800-2800 USED GEAR REDUCER / SPEED REDUCER / GEARBOX

MANUFACTURER: HORSBURGH & SCOTT

MODEL NO.: WD4800-2800

SERIAL NO.: 310528

HP RATING: 37

(27 KW)

INPUT RPM: 575

RATIO: 261/375:1

REDUCTION: DOUBLE

SERVICE FACTOR: 1.0

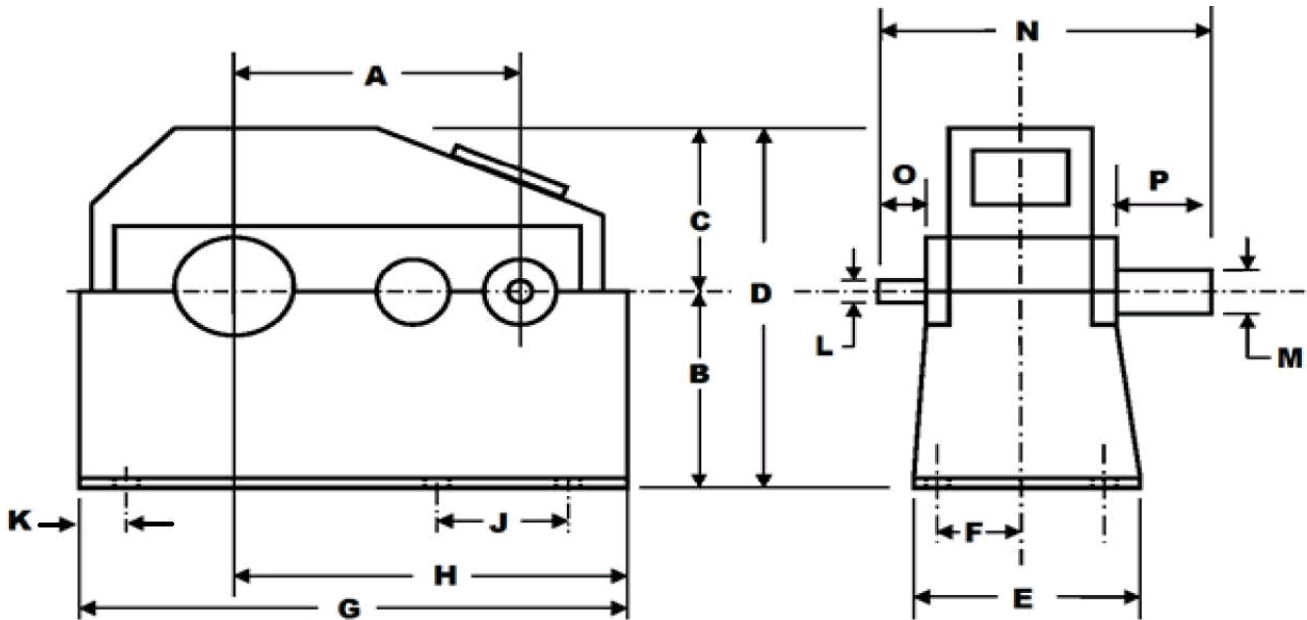
TYPE: PARALLEL

GEAR TYPE: HELICAL

BEARING TYPE: ROLLER

WEIGHT: 10,130 LBS.

(4,595 KG)



A=22"

E=36"

J=26"

N=59"

B=32.375"

F=N/A

K=3.375"

O=12.75"

C=37"

G=59"

L=2.5"

P=12.938"

D=69.375"

H=35"

M=8"

INVENTORY ID: 200396-000-00

**CASEYUSA®**

Revised 3/11/19

Page 1 of 1

**CASEY**

275 Kappa Drive, Pittsburgh, PA 15238

Ph: (800) 882-7000 • (412) 963-1111

Fax: (412) 963-0378

E-mail: [mechanicalsales@caseyusa.com](mailto:mechanicalsales@caseyusa.com)

Web: [www.caseyusa.com](http://www.caseyusa.com)