

300 HP (222 KW) NUTTALL 90R55388 CAT WT 20 USED GEAR REDUCER / SPEED REDUCER / GEARBOX

MANUFACTURER: NUTTALL GEAR CORP.

AGE: 1990

MODEL NO.: 90R55388

CATALOG NO.: WT 20

SERIAL NO.: 9101

HP RATING: 300

(222 KW)

INPUT RPM: 1750/2000

RATIO: 41.422:1

REDUCTION: TRIPLE

SERVICE FACTOR: 1.69

TYPE: PARALLEL

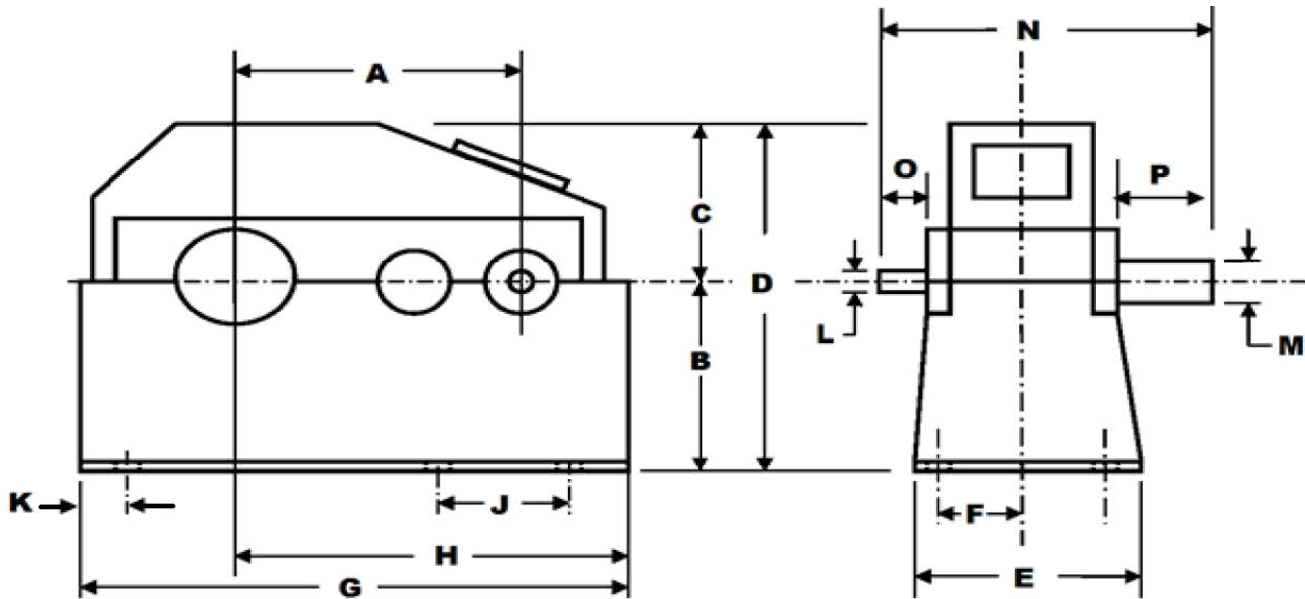
GEAR TYPE: HELICAL

BEARING TYPE: ROLLER

WEIGHT: 9,990 LBS.

(4,535 KG)

DRIVE MOTOR DATA: 300 HP, 1750/2000 RPM, CD506ATY (SOLD SEPARATELY - 130010-000-00)



A=32.75"

E=31"

J=25.5"

N=47.5"

B=20"

F=14"

K=6.25"

O=4.625"

C=19.375"

G=67"

L=1.4375"

P=11.25"

D=39.375"

H=42.5"

M=7.5"

INVENTORY ID: 200164-550-12

CASEYUSA®

CASEY

Revised 2/3/21

275 Kappa Drive, Pittsburgh, PA 15238

Ph: (800) 882-7000 • (412) 963-1111

Fax: (412) 963-0378

E-mail: mechanicalsales@caseyusa.com

Web: www.caseyusa.com