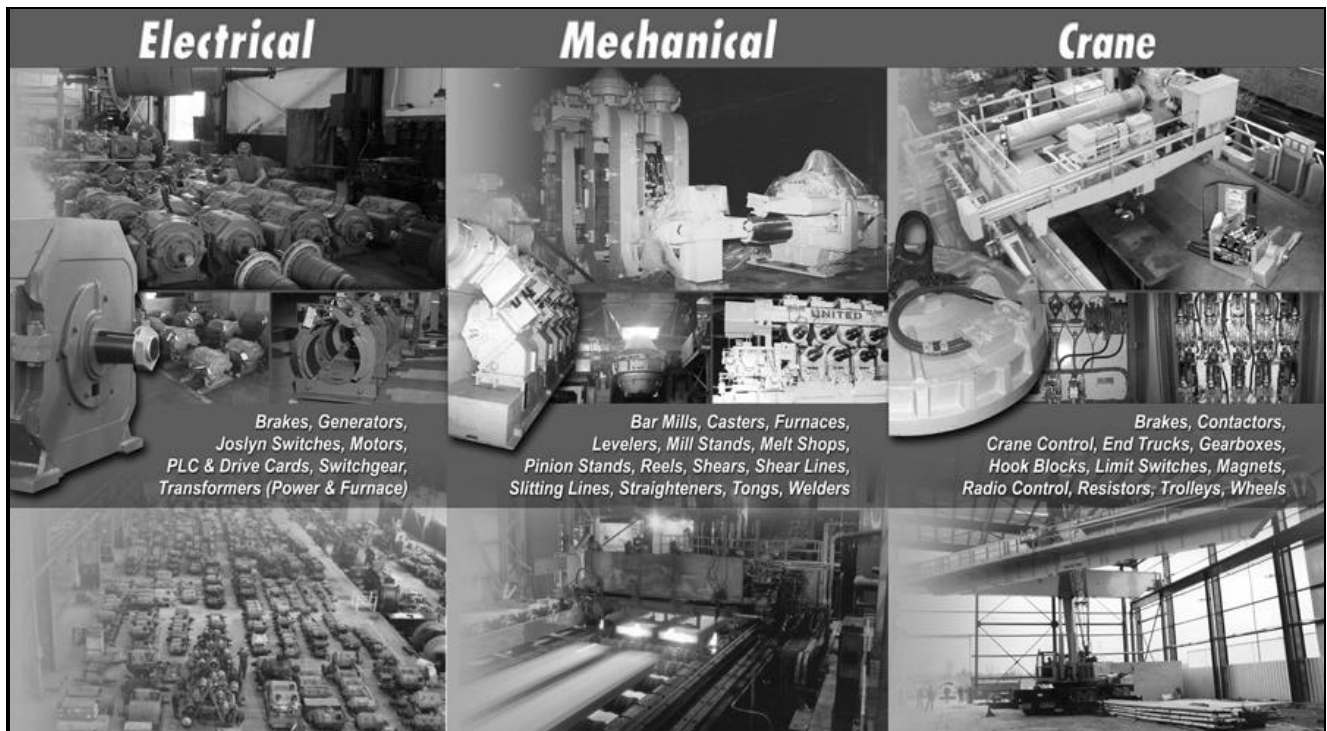


ARE MILL EQUIPMENT COSTS AN ISSUE...

WHY BUY NEW?



BUY SOMETHING PROVEN WITH QUICK DELIVERY...

CASEY

CASEY USA[®]

USED MILL EQUIPMENT RESELLERS & SPECIALISTS

275 KAPPA DRIVE • PITTSBURGH, PA 15238 • (412) 963-1111 • WWW.CASEYUSA.COM

TABLE OF CONTENTS

MILL ANCILLARY AND MAINTENANCE EQUIPMENT ITEMS

| | |
|---|--------------|
| AIR COMPRESSORS / AIR DRYERS | PAGE 1 |
| BRAKES (REBUILT) | PAGE 1 & 2 |
| BRAKE WHEELS (AISE) | PAGE 3 |
| BRAKE SHOES | PAGE 4 |
| CRANE CONTROL / CRANE DC LIMIT SWITCHES | PAGE 5 |
| CRANES/ CRANE CONTACTORS / TROLLEYS | PAGE 6 |
| P&H DC CRANE MOTORS / JIB CRANES / RESISTORS | PAGE 7 |
| CRANE WHEELS | PAGE 8 |
| MAGNETS / MAGNET CONTROLLERS / SPREADER BEAMS | PAGE 9 |
| MOTORS (TABLE) | PAGE 10 |
| MOTORS (800 SERIES / 600 SERIES) | PAGE 11 |
| AC VERTICAL PUMP MOTORS | PAGE 12 & 13 |
| PUNCH PRESS MOTORS | PAGE 14 |
| SQUIRREL CAGE MOTORS | PAGE 15 |
| SODIUM LIGHTS | PAGE 15 |
| MISCELLANEOUS ELECTRICAL ITEMS | PAGE 15 |
| HYDRAULIC POWER UNITS | PAGE 16 |
| PLC CARDS | PAGE 16 |
| RECTIFIERS & DC DRIVES | PAGE 17 |
| TRANSFORMERS (DRY TYPE) | PAGE 17 |
| MILL MOTOR COUPLINGS | PAGE 18 |
| PUMPS (HIGH PRESSURE DESCALE, HORIZONTAL, VACUUM, VERTICAL) | PAGE 19 |
| STRAINERS | PAGE 19 |
| SEPARATORS | PAGE 19 |
| GEAR REDUCERS / TEXTRON RIGHT ANGLE GEARBOX | PAGE 20 |
| SPEED INCREASERS | PAGE 20 |
| VALVES | PAGE 21 |
| TONGS | PAGE 21 |
| SCRAP CHOPPERS / ROLL GRINDERS | PAGE 22 |
| SPREADER BEAMS / VALVES | PAGE 22 |
| TABLES / TABLE ROLLS | PAGE 23 |
| LAB / MEASURING EQUIPMENT | PAGE 24 |
| MACHINE TOOLS / ROLL LATHES | PAGE 24 |
| MISCELLANEOUS EQUIPMENT | PAGE 24 |

TABLE OF CONTENTS

MELT SHOP EQUIPMENT

| | |
|--|---------|
| MELT SHOP | PAGE 25 |
| AOD VESSEL | PAGE 25 |
| BLAST FURNACE | PAGE 25 |
| BUCKET TRANSFER CAR / CAR WINCH | PAGE 25 |
| CASTERS | PAGE 25 |
| CHARGING BUCKETS / CLAMSHELL BUCKETS | PAGE 25 |
| LADLES / LADLE METALLURGY STATION | PAGE 26 |
| ELECTRIC ARC FURNACES / MELT SHOP COMPONENTS | PAGE 25 |

BAR, ROD, STRUCTURAL & TUBE EQUIPMENT

| | |
|---|--------------|
| BAR PEELER & TURNER | PAGE 27 |
| BELT POLISHER / SHOT BLASTERS | PAGE 27 |
| DRIVES / DRAW BENCH | PAGE 27 |
| GRINDERS / KOCKS CARS | PAGE 28 |
| MILLS | PAGE 28 |
| ERW MILLS | PAGE 29 |
| MILL STANDS | PAGE 30 |
| GAG PRESS / PLANET DEFORMATION MACHINE | PAGE 31 |
| PINION STANDS / COMBINATINO PINION STANDS | PAGE 31 |
| PINCH ROLLS / ROD BLOCK / BEAM SLITTER / POMINI TURNSTILE | PAGE 32 |
| MORGAN TEKISUN SIZING BLOCK | PAGE 33 |
| ROLLER GUIDES | PAGE 33 |
| SHEARS (COLD BAR, DOWN CUT, ROTARY, SHAPE) | PAGE 33 & 34 |

FLAT PRODUCT MILL EQUIPMENT

| | |
|---|------------|
| ANNEALING FURNACES | PAGE 35 |
| BELT WRAPPERS / C-HOOKS | PAGE 35 |
| CARS (TRANSFER / COIL) | PAGE 35 |
| LEVELERS (PLATE, SHEET, STRIP) | PAGE 36 |
| SLITTING LINES | PAGE 36 |
| SHEET LIFTERS | PAGE 37 |
| SHEAR LINES / COLD & HOT SHEARS | PAGE 37 |
| HOT STRIP MILL | PAGE 38 |
| MILLS (COLD) / MILLING MACHINE / ANNEALING & TEMPER LINE | PAGE 39 |
| PAINT LINE | PAGE 40 |
| PINCH ROLLS / SHEET LIFTERS / SIDE GUIDES | PAGE 40 |
| REELS (ENTRY & EXIT) SIDE TRIMMERS / SHEET STACKERS / WELDERS | BACK COVER |

MAINTENANCE

AIR COMPRESSORS

| | | | | |
|--|------|-----|--------|-----|
| INGERSOLL RAND #10755-000-00 #107756-000-00 | 3500 | PSI | 15 HP | (2) |
| GARDNER DENVER #107839-000-00 | 150 | PSI | 75 HP | (1) |
| INGERSOLL RAND #100322-000-00 #100323-00-00 | 125 | PSI | 50 HP | (2) |
| INGERSOLL RAND #100324-000-00 | 135 | PSI | 50 HP | (1) |
| JOY #104552-000-00 #104553-000-00 | 110 | PSI | 250 HP | (2) |
| SULLAIRE #11195-300-00 | 110 | PSI | 300 HP | (4) |

AIR DRYERS

150° F DELTECH AIR DRYER:
MODEL NO. PS-2D-S,
REFRIGERATED
COMPRESSED AIR TYPE,
250 PSIG MAX, 150° F
MAX INLET TEMPERATURE

#107728-000-00

BRAKES (REBUILT)

CLARK

| | | |
|-----|-----------|---------------|
| 21" | TYPE 106A | SERIES/SHUNT |
| 19" | TYPE 106B | 100 HP SERIES |
| 16" | TYPE 106B | SHUNT |
| 13" | TYPE 106B | 33 HP SERIES |
| 10" | TYPE 106B | SERIES/SHUNT |
| 8" | TYPE 106B | 19 HP SERIES |

CUTLER HAMMER

| | | |
|-----|---------|--------------|
| 30" | BUL 503 | SERIES/SHUNT |
| 30" | BUL 505 | SERIES/SHUNT |
| 23" | BUL 505 | SERIES/SHUNT |
| 19" | BUL 505 | SERIES/SHUNT |
| 16" | BUL 505 | 45 HP |
| 13" | BUL 505 | 26 HP |

EC&M

| | | |
|--------|------------|--------------|
| 30" | TYPE WB-60 | SERIES/SHUNT |
| 26" | TYPE WB-50 | SERIES/SHUNT |
| 23" | TYPE WB-40 | SERIES/SHUNT |
| 17" | TYPE WB-30 | SERIES/SHUNT |
| 13.25" | TYPE WB-22 | SERIES/SHUNT |
| 9.5" | TYPE WB-10 | SERIES/SHUNT |



CUTLER HAMMER
505 SERIES BRAKE

BRAKES (REBUILT)

GENERAL ELECTRIC

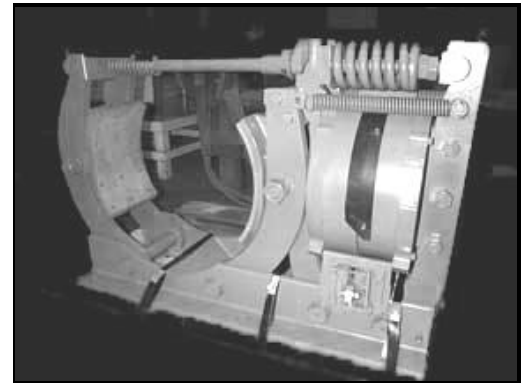
| | | |
|-----|--------------|--------------|
| 23" | TYPE IC-9528 | SHUNT/SERIES |
| 19" | TYPE IC-9528 | SHUNT/SERIES |
| 16" | TYPE IC-9528 | SHUNT/SERIES |
| 13" | TYPE IC-9528 | SHUNT/SERIES |
| 10" | TYPE IC-9528 | SHUNT/SERIES |
| 8" | TYPE IC-9528 | SHUNT/SERIES |

WESTINGHOUSE

| | | |
|-----|---------------|--------------|
| 30" | TYPE TM-3014 | SHUNT |
| 23" | TYPE TM-2311 | SHUNT/SERIES |
| 23" | TYPE DI-239-F | SHUNT/SERIES |
| 19" | TYPE TM-1985 | SHUNT/SERIES |
| 16" | TYPE TM-1665 | SHUNT |
| 13" | TYPE TM-1355 | SHUNT/SERIES |
| 13" | TYPE SA | SERIES |
| 10" | TYPE TM-1035 | SHUNT |
| 8" | TYPE TM-83 | SHUNT/SERIES |

SQUARE D

| | | |
|-----|--------------|---------------|
| 23" | TYPE 5010-F | SHUNT/SERIES |
| 23" | TYPE 5010-T | SHUNT/SERIES |
| 19" | TYPE 5010-T | SHUNT/SERIES |
| 16" | TYPE 5010-AT | SHUNT/SERIES |
| 16" | TYPE 5010 -F | 100 HP SERIES |
| 16" | TYPE 5010-T | 45 HP SERIES |
| 13" | TYPE 5010-T | SHUNT/SERIES |
| 13" | TYPE 5010-AT | SHUNT/SERIES |
| 10" | TYPE 5010-T | SHUNT/SERIES |



VIEW OUR ENTIRE BRAKE INVENTORY

WWW.CASEYUSA.COM

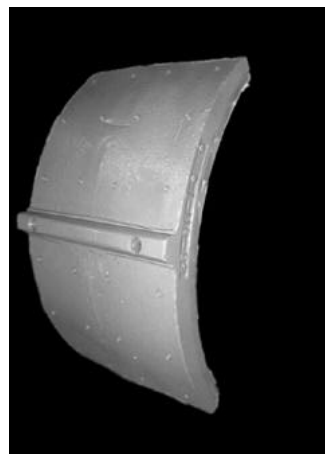
MAINTENANCE

AISE BRAKE WHEELS

| DIA. | OFFSET | MOTOR BORE | FACE WIDTH | HUB OFFSET | HUB LENGTH | BORE DIA. |
|------|----------|------------|------------|------------|------------|-----------|
| 8" | STANDARD | 602 | 3 1/4" | 4" | 2 15/16" | 1 3/4" |
| 8" | STANDARD | 603 | 3 1/4" | 3 1/4" | 3 3/4" | 2" |
| 8" | STANDARD | 604 | 3 1/4" | 3 1/2" | 3 1/2" | 2" |
| 10" | STANDARD | 603/604 | 3 3/4" | 4 1/4" | 3 1/2" | 2" |
| 10" | STANDARD | 606 | 3 3/4" | 4 1/4" | 4" | 2 1/2" |
| 13" | STANDARD | 608 | 5 3/4" | 5 3/8" | 4 1/2" | 3" |
| 13" | STANDARD | 610 | 5 1/2" | 5 3/8" | 4" | 3 1/4" |
| 13" | STANDARD | 612 | 5 3/4" | 5 3/8" | 5" | 3 5/8" |
| 16" | STANDARD | 608 | 6 3/4" | 6 1/2" | 4 1/2" | 3" |
| 16" | STANDARD | 610 | 6 3/4" | 6 1/2" | 4 1/2" | 3 1/4" |
| 16" | STANDARD | 612 | 6 3/4" | 6 1/2" | 5" | 3 5/8" |
| 16" | STANDARD | PILOT | 6 3/4" | 6 1/2" | 4 1/2" | 1" |
| 19" | STANDARD | 612 | 8 3/4" | 7 1/2" | 5" | 3 5/8" |
| 19" | STANDARD | 614 | 8 3/4" | 7 1/2" | 5" | 4 1/4" |
| 19" | STANDARD | 616 | 8 3/4" | 7 1/2" | 5 1/2" | 4 5/8" |
| 23" | STANDARD | 616 | 11 1/4" | 8 1/4" | 5 1/2" | 4 5/8" |
| 30" | STANDARD | 620 | 14" | 10 1/2" | 6 3/4" | 5 13/16" |
| 30" | STANDARD | 622 | 14 1/4" | 10 1/4" | 7 1/4" | 6 1/4" |



AISE
BRAKE WHEEL



23" CUTLER HAMMER
BUL 505 BRAKE SHOE

BRAKE SHOES

| | |
|---------|-----------------------------|
| 6" | WESTINGHOUSE TYPE DI |
| 8" | CLARK 106-B |
| 8" | CUTLER HAMMER BUL 503 & 505 |
| 8" | GE IC9528 |
| 8" | P&H TYPE CD & SBE |
| 8" | SQ-D TYPE 5010-F |
| 8" | WESTINGHOUSE TYPE DI & SA |
| 8" | WAGNER TYPE H |
| 9 1/2" | EC&M WB-10 |
| 10" | CLARK TYPE 106A & 106B |
| 10" | CUTLER HAMMER BUL 503 & 505 |
| 10" | GE TYPE IC9528 |
| 10" | P&H TYPE CD & SBE |
| 10" | SQ-D 5010-T |
| 10" | WAGNER TYPE H |
| 10" | WESTINGHOUSE TYPE DI |
| 11" | P&H TYPE CD |
| 13" | CLARK 106-B |
| 13" | EC&M WB22 |
| 13" | GE TYPE IC9528 |
| 13" | P&H TYPE CD & SBE |
| 13" | WESTINGHOUSE TYPE DI & SA |
| 13 1/4" | EC&M WB-20 |
| 14" | CLARK TYPE 106A |
| 14" | CUTLER HAMMER BUL 503 |

| | |
|-----|--------------------------------|
| 16" | CUTLER HAMMER BUL 505 |
| 16" | GE TYPE IC9528 |
| 16" | P&H TYPE CD |
| 16" | SQUARE-D TYPE 5010T |
| 16" | WESTINGHOUSE TYPE TM & DI |
| 17" | EC&M WB-30 |
| 18" | CLARK 106-A |
| 18" | WAGNER TYPE H |
| 18" | CUTLER HAMMER BUL 503 |
| 19" | CLARK 106-A & 106-B |
| 19" | CUTLER HAMMER BUL 505 |
| 19" | GE IC9528 |
| 21" | CUTLER HAMMER BUL 503 |
| 23" | CLARK 106-B |
| 23" | CUTLER HAMMER BUL 505 |
| 23" | EC&M WB-40 |
| 23" | GE IC9528 |
| 23" | SQUARE -D TYPE 5010-F |
| 23" | WESTINGHOUSE TYPE DI & TYPE TM |
| 24" | CUTLER HAMMER BUL 503 |
| 26" | CLARK 106-A |
| 26" | EC&M WB-50 |
| 30" | CUTLER HAMMER BUL 503 & 505 |
| 30" | WESTINGHOUSE TYPE TM |

MAINTENANCE

CRANE CONTROL

SQUARE D TYPE M

| NEMA | MOTION | SPEEDS | QTY. |
|------|-----------------------------------|--------|------|
| 2 | BRIDGE OR TROLLEY | 5 | 9 |
| 3 | BRIDGE OR TROLLEY | 5 | 28 |
| 3 | HOIST | 5 | 5 |
| 4 | BRIDGE OR TROLLEY | 5 | 19 |
| 4 | HOIST | 5 | 9 |
| 5 | BRIDGE OR TROLLEY | 5 | 7 |
| 5 | HOIST | 5 | 22 |
| 5 | MAINLINE, CLASS 6140, 300 AMPS | | 11 |
| 6 | DUPLEX BRIDGE | 5 | 1 |
| 6 | HOIST | 5 | 4 |
| 6 | MAINLINE, CLASS 6140, 600 AMPS | | 4 |

CUTLER HAMMER

| NEMA | MOTION | SPEEDS | QTY. |
|------|--------------------------|--------|------|
| 2 | PLUG & REVERSE | 5 | 3 |
| 3 | HOIST | 5 | 12 |
| 3 | PLUG & REVERSE | 5 | 30 |
| 3 | DUPLEX PLUG & REVERSE | 5 | 3 |
| 4 | HOIST | 5 | 78 |
| 4 | PLUG & REVERSE | 5 | 6 |
| 4 | DUPLEX PLUG & REVERSE | 5 | 2 |
| 5 | HOIST | 5 | 11 |
| 5 | DUPLEX HOIST | 5 | 1 |
| 5 | PLUG & REVERSE | 5 | 8 |
| 5 | DUPLEX PLUG & | 5 | 9 |
| 6 | HOIST | 6 | 5 |
| 6 | PLUG & REVERSE | 6 | 2 |
| | DUPLEX PLUG & | 6 | 2 |

CRANE DC LIMIT

CUTLER HAMMER

| QTY | TYPE | QTY | TYPE |
|-----|-------|-----|--------------|
| 3 | P50 | 5 | P200A DUPLEX |
| 25 | P100 | 10 | P375 |
| 6 | P100A | 3 | P375 DUPLEX |
| 2 | P200A | | |

EC&M

EUCLID

| | | | |
|---|-----|---|----|
| 5 | #20 | 3 | #5 |
|---|-----|---|----|

HUBBEL

P&H

| | | | |
|---|--------|---|-------|
| 3 | SIZE 5 | 1 | DB50 |
| 1 | SIZE 6 | 1 | DB135 |
| | | 1 | DB300 |
| | | 1 | DB540 |

SQUARE D

| | | | |
|----|------------|---|------------|
| 4 | #10 | 1 | #40 |
| 28 | #20 | 1 | #40 DUPLEX |
| 2 | #20 DUPLEX | 1 | #50 DUPLEX |
| 1 | #30 DUPLEX | | |

CABLE REELS

GLEASON, SHAWBOX, AERO-MOTIVE
VARIOUS AMPS & LIFTS

HOOKS

NEW! UN-USED - UP TO 150 TONS!

HOOK BLOCKS

COMPLETE HOOK BLOCKS 2-150 TONS!

CONTACTORS (FOR CRANE CONTROL)

CUTLER HAMMER

| NEMA SIZE | TYPE | CAT# 240 VOLT |
|-----------|---------|------------------|
| 2 | S/P N/O | C80DG12 |
| 2** | D/P N/O | C80DG22 |
| 3 | S/P N/O | C80EH121 |
| 3 | S/P N/C | C80ED421 |
| 4 | S/P N/O | C80FJ121 |
| 4 | S/P N/C | C80FJ421 |
| 5 | S/P N/O | C80GK121 |
| 5 | S/P N/C | C80GK421 |
| 6 | S/P N/O | C80JL121 |
| 6 | S/P N/C | C80JL421 |
| 8 | S/P N/O | C80W121 |

ALSO LTL CONTACTORS - NEMA 3 THROUGH NEMA 6

** USED FOR BRAKE RELAY

CLARK SYLVANIA "KD"

GENERAL ELECTRIC

| NEMA SIZE | CAT# | NEMA SIZE | CAT# |
|-----------|-------|-----------|----------|
| 1 | 74U11 | 150 | YA01A2-C |
| 2 | 74U12 | 150A | D5303-A |
| 3 | 74U13 | 300A | D5303-A |
| 4 | 74U14 | 10A | D5303-A |
| 5 | 74U15 | 150 | Y105W35B |

CRANES

| |
|---|
| 2 TONYALE 220/440 VOLTS AC JIB CRANE |
| (5) 10 TON, 96'2" SPAN, 38' OF LIFT, 230 VDC, CRANE MFG., CLASS E |
| (2) 30 TON, 90' SPAN, 480 VAC, 35' LIFT, DEMAG CRANES |
| 30 TON, 75' 6" SPAN, 34' LIFT, 460 VAC, P&H CRANE |
| 25 TON, 57' 2" SPAN, 20' LIFT, 480 VAC, KRANCO CRANE |
| 30/5 TON, 65' SPAN, 50' LIFT, 440 VAC, BROWNING CRANE |
| 50 TON, 50'4" SPAN, 30' LIFT, 230 VDC, BROWNING, CLASS E |
| 75/25 TON, 73'4" SPAN, 37'6" LIFT, 230 VDC, CLEVELAND CLASS E |

CONTACTORS (FOR CRANE CONTROL)

SQUARE D TYPE "H"

| NEMA SIZE | CAT# |
|-----------|-------|
| 1 | HCO-1 |
| 2 | HDO-1 |
| 3 | HEO-1 |
| 4 | HFO-1 |
| 5 | HGO-1 |

SQUARE D TYPE "M"

| NEMA SIZE | TYPE | CAT# 240 VOLT | CLASS |
|-----------|---------|------------------|-------|
| 2 | S/P N/O | MXDO-1 | 7004 |
| 2 | S/P N/C | MXDO-3 | 7004 |
| 3 | S/P N/O | MEO-1 | 7004 |
| 3 | S/P N/C | MEO-3 | 7004 |
| 4 | S/P N/O | MFO-1 | 7004 |
| 4 | S/P N/C | MFO-3 | 7004 |
| 5 | S/P N/O | MGO-1 | 7004 |

TROLLEYS

7.5 TON, 10'6" GAUGE, 16'3 LIFT, 440 VAC
CLASS D TROLLEY

10 TON, 6'6" GAUGE, 20'2" LIFT, 230 VDC
CLASS E TROLLEY

150/25 TON, 14' GAUGE, 50' OF LIFT, 460 VAC
CLASS D TROLLEY

MAINTENANCE

P&H DC CRANE MOTORS

SERIES WOUND - 230V

| FRAME | HP | SPEED |
|-------------------|-------|---------|
| CR-63 | 110 | 450 |
| CR-62 | 100 | 500 |
| CR-61 | 70 | 550 |
| CR-52 | 65 | 600 |
| CR-51 | 50 | 600 |
| CR-42 | 39 | 600 |
| CR-41 | 25 | 600 |
| CR-32 | 20 | 600 |
| CR-21 | 8.5 | 675 |
| CP-12 | 5 | 750 |
| CP-11 | 3 | 750 |
| NT 11 3/4 X 8 | 40 | 600 |
| NT 12 X 10 | 35 | 600 |
| NT 11 3/4 X 10 | 24-45 | 600/500 |
| NT 10 1/2 X 5 3/4 | 20 | 525 |
| NT 10 X 5 1/2 | 15 | 600 |
| NT 9 X 5 1/2 | 10 | 675 |
| NT 8 X 4 | 6 | 600 |
| NT 7 X 3 1/2 | 3 | 600 |
| MT6 | 3 | 900 |
| MT10 | 20 | 500 |
| MT11 | 25 | 500 |
| MT12 | 35 | 500 |

JIB CRANES

| | TYPE | MFG. | QTY |
|-------|-----------|-----------|-----|
| 1 TON | JIB CRANE | WRIGHTWAY | (1) |
| 3 TON | JIB CRANE | GURDEL | (2) |
| 2 TON | JIB CRANE | BUDGIT | (2) |
| 1 TON | JIB CRANE | YALE | (1) |

RESISTORS

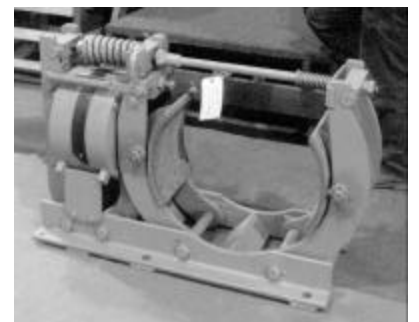
| AMP | OHMS | MFG. | TYPE |
|-----|--------|---------------|----------|
| 13 | 40 | SQUARE D | TW13D |
| 16 | 25.2 | SQUARE D | TW16D |
| 21 | 15.75 | SQUARE D | TW21D |
| 27 | 9.55 | SQUARE D | TW27D |
| 32 | 6.96 | SQUARE D | TW32D |
| 37 | 5.2 | SQUARE D | TW37D |
| 42 | 4.14 | SQUARE D | TW42D |
| 50 | 2.55 | SQUARE D | TW50D |
| 62 | 1.445 | SQUARE D | TW62D |
| 72 | 1.022 | SQUARE D | TW72D |
| 85 | 0.741 | SQUARE D | TW85D |
| 100 | 0.504 | SQUARE D | TW100D |
| 120 | 0.341 | SQUARE D | TW120D |
| 150 | 0.231 | SQUARE D | TW150D |
| 180 | 0.198 | SQUARE D | TW180D |
| 220 | 0.126 | SQUARE D | TW220D |
| 280 | 0.0748 | SQUARE D | TW280D |
| 360 | 0.0432 | SQUARE D | TW360D |
| 430 | 0.306 | SQUARE D | TW430D |
| 500 | 0.021 | SQUARE D | TW500D |
| 209 | 0.16 | CUTLER HAMMER | G11WL16 |
| 189 | 0.125 | CUTLER HAMMER | G11WL12 |
| 150 | 0.2 | CUTLER HAMMER | G11WL20 |
| 134 | 0.25 | CUTLER HAMMER | G11WL25 |
| 118 | 0.32 | CUTLER HAMMER | G11WL32 |
| 113 | 0.4 | CUTLER HAMMER | G11WL40 |
| 101 | 0.5 | CUTLER HAMMER | G11WL50 |
| 84 | 0.625 | CUTLER HAMMER | G11WL62 |
| 75 | 0.8 | CUTLER HAMMER | G11WL80 |
| 67 | 1 | CUTLER HAMMER | G11WL100 |
| 64 | 1.25 | CUTLER HAMMER | G11L125 |
| 57 | 1.6 | CUTLER HAMMER | G11WL160 |
| 54 | 2 | CUTLER HAMMER | G11WL200 |
| 48 | 2.5 | CUTLER HAMMER | G11WL250 |
| 43 | 3.2 | CUTLER HAMMER | G11WL320 |
| 40 | 4 | CUTLER HAMMER | G11WL400 |
| 35 | 5 | CUTLER HAMMER | G11WL500 |
| 33 | 6.25 | CUTLER HAMMER | G11WL625 |
| 29 | 8 | CUTLER HAMMER | G11WL800 |
| 14 | 32.56 | CUTLER HAMMER | G11WL3F |

CRANE WHEELS

| THREAD DIA. "A" | TREAD TYPE M | TREAD WIDTH WITH LOWER "E" | BORE DIA. "H" |
|-----------------|--------------|----------------------------|---------------|
| 12" | STRAIGHT | 1 7/8" | 3 5/8" |
| 12" | STRAIGHT | 2" | 2 3/8" |
| 14 3/4" | STRAIGHT | 2" | 4" |
| 16" | STRAIGHT | 2 1/2" | 3 1/2" |
| 18" | STRAIGHT | 3" | 5 1/2" |
| 20 3/4" | STRAIGHT | 3 1/2" | 5 |
| 21" | TAPERED | 3 1/8" | 4 1/4" |
| 23 1/4" | STRAIGHT | 2 3/4" | 4 1/2" |
| 24" | STRAIGHT | 3 9/16" | 6 1/8" |
| 29" | STRAIGHT | 3 7/8" | 5 5/8" |

**VIEW MORE ELECTRICAL
INVENTORY ON LINE**

WWW.CASEYUSA.COM



MAINTENANCE

MAGNETS

CIRCULAR MAGNETS

| | |
|-----|---|
| 64" | EC&M, 2.8 OHM |
| 65" | OHIO SRDC, DEEP FIELD, REWOUND |
| 66" | MEAD, 2.6 OHM, 90 AMP, DEEP FIELD, ALUMINUM, REWOUND - NEW POLES! |
| 68" | NEC |
| 68" | SQ-D SM680D |
| 76" | NEC |
| 80" | OHIO |
| 84" | SQ.-D |
| 93" | OHIO DCWX - RECONDITIONED! |



RECTANGULAR MAGNETS

| | |
|------------------|--|
| 32" X 75 | GAUSS 30 AMP COPPER 60% DUTY |
| 29" X 59" | SCHRADER HOT BOTTOM 7200# |
| 26" X 52" | WALKER, 42 AMP |
| 22" X 35'L X 35" | STEARNS BI POLAR, 16.7 AMP, UNUSED! |
| 20" x 66" | CUTLER HAMMER |
| 20" X 28" | OHIO, 20 AMP, 75% DUTY |
| 20" X 43" | WALKER 19.97 AMP, 50% DUTY |
| 18" X 52" | OHIO, 13 COLD AMP |
| 13" X 48" | WALKER BI POLAR, 12.45 AMPS, 75% DUTY |
| 13" X 60" | STEARNS, 14.1 AMP (25" DEEP) |
| 13" X 66" | STEARNS |



SCRAP HANDLING MAGNETS

| | |
|-------------------|---|
| 72" | NEC 114 AMP, 2.6 OHM, REWOUND |
| 76" | NEC 92 AMP, EXTRA DEEP FIELD |
| 78" X 126" | WALKER RLS D (NEW!) |
| 80" | OHIO DUAL 230V/140V 174/106A 19000# |
| 80" | OHIO DEEP FIELD, 174/106 AMP, 230V/140V |
| 84" | SQUARE D SM840D, 151 AMP, 14,430# |
| 84" | OHIO SCRAP HANDLING |

COIL HANDLING - EYE VERTICAL

| | |
|-----|---|
| (4) | 70" x 70" WALKER QUADRAPOLAR, WEIGHT 24,000#, 75% DUTY CYCLE, 53 AMPS |
| | FOR ANNEALING DEPARTMENTS! |



SPREADER BEAMS

| | |
|-----|--|
| 34' | SPREADER BEAM USED WITH 3-20 X 43 WALKER RECTANGULAR MAGNET |
| 20' | SPREADER BEAM USED WITH 2-20 X 43 WALKER RECTANGULAR MAGNET |
| 14' | SPREADER BEAM USED WITH 2-13 X 66 STEARNS RECTANGULAR MAGNET |

HUBBELL MAGNET CONTROLLERS

| MFG. | AMPACITY | TYPE | QTY |
|---------|----------|------|-----|
| HUBBELL | 80 AMPS | 4291 | 8 |
| HUBBELL | 130 AMPS | 4291 | 15 |
| HUBBELL | 175 AMPS | 4291 | 3 |

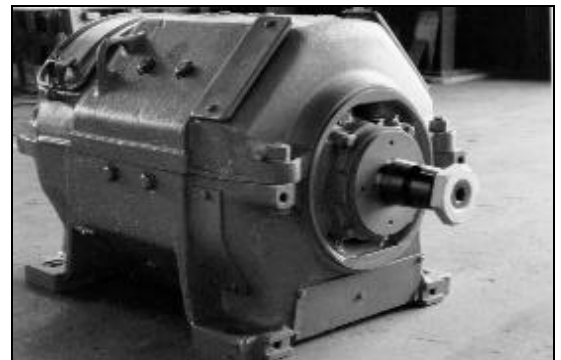
MOTORS (TABLE)

| HP | RPM | MFG. | FRAME |
|------|----------|------------------|------------------|
| 2.3 | 126 | GENERAL ELECTRIC | MDT-606 |
| 2/4 | 575/1150 | GENERAL ELECTRIC | MDY-736A |
| 2.5 | 160 | GENERAL ELECTRIC | MDT-804-AE |
| 3 | 750 | WESTINGHOUSE | SK503A |
| 3 | 475 | GENERAL ELECTRIC | MDY444AA2 |
| 3 | 750 | GENERAL ELECTRIC | MDY449AA2 |
| 5 | 750 | GENERAL ELECTRIC | MDY746A |
| 5.2 | 215 | GENERAL ELECTRIC | PMDT806AE |
| 6.5 | 140/252 | WESTINGHOUSE | MCT-606 |
| 7.44 | 93 | GENERAL ELECTRIC | MDT-610 |
| 7.5 | 275 | GENERAL ELECTRIC | MDT-606-AEL |
| 7.5 | 84 | WESTINGHOUSE | MCT-610 |
| 11 | 53 | WESTINGHOUSE | MCT-614 |
| 12.5 | 82 | WESTINGHOUSE | MCT-612 |
| 13.5 | 219 | GENERAL ELECTRIC | MDT-608 |
| 13.5 | 250 | WESTINGHOUSE | MDT-608 |
| 14 | 110 | GENERAL ELECTRIC | MDT-610 |
| 26.2 | 76 | GENERAL ELECTRIC | MDT-616 |
| 29.2 | 193 | GENERAL ELECTRIC | MDT-612 |
| 30 | 110 | GENERAL ELECTRIC | MDT-814 |
| 30.3 | 80 | GENERAL ELECTRIC | MDT-616 |
| 32 | 105 | GENERAL ELECTRIC | MDT-814 |
| 35 | 625 | GENERAL ELECTRIC | MDT-608 |
| 34 | 92 | WESTINGHOUSE | MCT-616 |
| 44 | 92 | WESTINGHOUSE | MCT-618 |
| 46.9 | 90 | GENERAL ELECTRIC | MDT-618 |
| 50 | 80 | GENERAL ELECTRIC | MDT-818 |
| 50 | 250 | GENERAL ELECTRIC | MDT-812 |
| 50 | 585 | GENERAL ELECTRIC | MDT-610 |
| 50 | 585 | GENERAL ELECTRIC | MDT-610, 550V |
| 61 | 187 | WESTINGHOUSE | MCT-616 |
| 62 | 80 | GENERAL ELECTRIC | MDT-620 |
| 72 | 235 | GENERAL ELECTRIC | MDT-814 ARM ONLY |
| 75 | 195 | GENERAL ELECTRIC | MD-616 |

MULTIPLE QUANTITIES AVAILABLE!



WESTINGHOUSE MC-606 MILL MOTOR



GENERAL ELECTRIC 600 SERIES MOTOR

MAINTENANCE

800 SERIES MOTORS

WESTINGHOUSE 230 VDC

FRAME

| | |
|---------|------------------------------------|
| MC-802A | SERIES / SHUNT / COMPOUND |
| MC-802B | SERIES / SHUNT / COMPOUND |
| MC-802C | SERIES / SHUNT / COMPOUND |
| MC-803 | SERIES / COMPOUND |
| MC-804 | SERIES / SHUNT / STAB SHUNT/ COMP. |
| MC-806 | SERIES / SHUNT / COMPOUND |
| MC-808 | SERIES / SHUNT / COMPOUND |
| MC-810 | SERIES / SHUNT / COMPOUND |
| MC-814 | SHUNT |
| MC-816 | SHUNT / SHUNT |

GENERAL ELECTRIC 230 VDC

FRAME

| | |
|---------|---------------------------|
| MD-802A | SERIES / SHUNT / COMPOUND |
| MD-802B | SERIES / SHUNT / COMPOUND |
| MD-802C | SERIES / SHUNT / COMPOUND |
| MD-803 | SERIES / SHUNT / COMPOUND |
| MD-804 | SERIES / SHUNT / COMPOUND |
| MD-806 | SERIES / SHUNT / COMPOUND |
| MD-808 | SERIES / SHUNT / COMPOUND |
| MD-810 | SERIES / SHUNT / COMPOUND |
| MDV-812 | SHUNT |
| MD-812 | SERIES / SHUNT |
| MD-814 | SERIES |
| MD-816 | SERIES |
| MD-818 | SHUNT |

600 SERIES MOTORS

WESTINGHOUSE

FRAME

| | |
|-----|--------------------------------|
| 602 | SERIES / SHUNT / COMPOUND / SS |
| 603 | SERIES / SHUNT / COMPOUND / SS |
| 604 | SERIES / SHUNT / COMPOUND / SS |
| 606 | SERIES / SHUNT / COMPOUND / SS |
| 608 | SERIES / SHUNT / COMPOUND / SS |
| 610 | SERIES / SHUNT / COMPOUND / SS |
| 612 | SERIES / SHUNT / COMPOUND / SS |
| 614 | SERIES / SHUNT / COMPOUND / SS |
| 616 | SERIES / SHUNT / COMPOUND / SS |
| 618 | SERIES / SHUNT / COMPOUND / SS |
| 620 | SERIES / STAB SHUNT |
| 622 | SERIES / STAB SHUNT |

GENERAL ELECTRIC

FRAME

| | |
|-----|--------------------------------|
| 602 | SERIES / SHUNT / COMPOUND |
| 603 | SERIES / SHUNT / COMPOUND / SS |
| 604 | SERIES / SHUNT / COMPOUND / SS |
| 606 | SERIES / SHUNT / COMPOUND / SS |
| 608 | SERIES / SHUNT / COMPOUND / SS |
| 610 | SERIES / SHUNT / COMPOUND / SS |
| 612 | SERIES / SHUNT / COMPOUND / SS |
| 614 | SERIES / SHUNT / COMPOUND / SS |
| 616 | SERIES / SHUNT / COMPOUND / SS |
| 618 | SERIES / SHUNT / COMPOUND |
| 620 | SERIES / SHUNT / COMPOUND |
| 622 | SHUNT |
| 624 | SHUNT |

AC VERTICAL PUMP MOTORS

| HP | VOLTAGE 1 | RPM | MFG. | FRAME |
|-----|-----------|------|------------------|-----------|
| 100 | 230/460 | 3560 | LOUIS ALLIS | 405UP |
| 100 | 460 | 885 | WESTINGHOUSE | 440HPH |
| 100 | 460 | 1780 | US ELECTRIC | 405TP |
| 125 | 230/460 | 885 | RELIANCE | L440Y |
| 125 | 440 | 1780 | WESTINGHOUSE | 607P |
| 125 | 460 | 1185 | WESTINGHOUSE | 440HP20 |
| 125 | 460 | 1775 | GENERAL ELECTRIC | B444HP220 |
| 125 | 460 | 1775 | WESTINGHOUSE | 440HPH |
| 125 | 460 | 3565 | LOUIS ALLIS | 444TP |
| 150 | 460 | 1190 | GENERAL ELECTRIC | L445TP16 |
| 150 | 460 | 1780 | US ELECTRIC | 447VP |
| 150 | 2300 | 1180 | GENERAL ELECTRIC | 6325P |
| 200 | 460 | 705 | WESTINGHOUSE | 587.5P24 |
| 200 | 460 | 885 | RELIANCE | 449HPZ |
| 200 | 460 | 1775 | US ELECTRIC | 445TP |
| 200 | 2300 | 880 | GENERAL ELECTRIC | 6318P20 |
| 250 | 2300 | 880 | GENERAL ELECTRIC | 6326P24 |
| 250 | 2300 | 1190 | GENERAL ELECTRIC | L509TP20 |
| 350 | 460 | 710 | GENERAL ELECTRIC | 6338P30 |
| 350 | 2300 | 1764 | GENERAL ELECTRIC | 6326P30 |
| 400 | 4000 | 1170 | GENERAL ELECTRIC | 6335P |
| 600 | 4160 | 1185 | TATUNG | 450LS |

MAINTENANCE

AC VERTICAL PUMP MOTORS

| HP | VOLTAGE 1 | RPM | MFG. | FRAME |
|-----|-----------|------|------------------|-----------|
| 7.5 | 230/460 | 1155 | US ELECTRIC | 254 TPH |
| 10 | 230/460 | 1745 | WESTINGHOUSE | 215HP |
| 15 | 230/460 | 1160 | WESTINGHOUSE | 286UP |
| 20 | 230/460 | 1760 | US ELECTRIC | 256TPH |
| 20 | 460 | 1165 | US ELECTRIC | 286TCV-TE |
| 25 | 220/440 | 1170 | MARATHON | 324TC |
| 25 | 230/460 | 1800 | US ELECTRIC | 324UP |
| 25 | 460 | 1175 | RED BAND | 6364UD |
| 25 | 460 | 1760 | US ELECTRIC | 284HP |
| 30 | 230 | 1770 | GENERAL ELECTRIC | 324TP16 |
| 30 | 230/460 | 880 | GENERAL ELECTRIC | 365TP16 |
| 40 | 230/460 | 3650 | US ELECTRIC | 365VPTE |
| 40 | 460 | 1765 | WESTINGHOUSE | 320TB |
| 50 | 230/460 | 1775 | GENERAL ELECTRIC | L326TP16 |
| 50 | 230/460 | 1800 | US ELECTRIC | 405UP |
| 60 | 440 | 1760 | WESTINGHOUSE | 444PZ |
| 75 | 220/440 | 1175 | WESTINGHOUSE | 504P |
| 100 | 230/460 | 1180 | GENERAL | B444VP16 |
| 100 | 230/460 | 1780 | US ELECTRIC | 405VPTE |
| 100 | 230/460 | 3555 | RELIANCE | 405HPZ |
| 100 | 230/460 | 3560 | GENERAL ELECTRIC | 405TPZ16 |

PUNCH PRESS MOTORS

| HP | SPEED | VOLTAGE | MFG. | FRAME |
|-----|-------|---------|----------------------|--------|
| 7.5 | 1085 | 230/460 | WESTINGHOUSE | 365T |
| 10 | 1105 | 230/460 | WESTINGHOUSE | 284T |
| 15 | 795 | 230/460 | US ELECTRIC | 404 US |
| 40 | 858 | 230/460 | ALLIS CHALMERS | 445T |
| 75 | 660 | 460 | GENERAL ELECTRIC | 8188S |
| 75 | 820 | 440 | GENERAL ELECTRIC | 8188Z |
| 75 | 1130 | 460 | ELECTRICAL APPARATUS | 504 |
| 125 | 850 | 440 | GENERAL ELECTRIC | 8188 |

INVERTER DUTY MOTORS

270/25.4 HP, 1190/110 RPM, 460/50 VOLT, GE FRAME 509LL (QTY. 10)

MULTI SPEED MOTORS

| HP | SPEED | VOLTAGE | MFG. | FRAME |
|---------|-----------|---------|------------------|-------|
| 20/5 | 1765/880 | 460 | GENERAL ELECTRIC | 284T |
| 22.5/7 | 1785/565 | 460 | DETROIT HOIST | 326 U |
| 25 | 1085/225 | 460 | IMPERIAL | 405TS |
| 50/12.5 | 1770/880 | 440 | WESTINGHOUSE | 540 |
| 50/13 | 1775/885 | 460 | GENERAL ELECTRIC | 364TS |
| 50/50 | 1770/1170 | 460 | WESTINGHOUSE | 449T |
| 60/10 | 1785/890 | 440 | WESTINGHOUSE | 444US |
| 75/19 | 1770/885 | 440 | RELIANCE | 444U |
| 75/19 | 1770/890 | 440 | RELIANCE | 405TS |
| 75/60 | 3555/2960 | 460 | RELIANCE | 365TS |

MAINTENANCE

MOTOR STARTERS - SQ. CAGE

| HP | VOLTAGE | MFG. | TYPE |
|-----|---------|------------------|-----------------|
| 40 | 480 | CLARK | FVNR |
| 40 | 480 | MOTORTRONICS | REDUCED VOLTAGE |
| 50 | 480 | SQUARE D | FVNR |
| 150 | 200 | FURNAS | FVNR |
| 150 | 480 | BENSHAW | REDUCED VOLTAGE |
| 150 | 480 | MOTORTRONICS | REDUCED VOLTAGE |
| 240 | 120 | ALLEN BRADLEY | COMBINATION |
| 240 | 120 | ALLEN BRADLEY | FVNR |
| 350 | 2300 | GENERAL ELECTRIC | FVNR |
| 400 | 600 | CUTLER HAMMER | FVNR |
| 600 | 2300 | CUTLER HAMMER | FVNR |

MISCELLANEOUS ELECTRIC ITEMS

MCC

600 KVAR AUTOVAR PACKAGE

(3) COMPLETE 30 HP, ALLEN BRADLEY 1395 DRIVES
AND (3) PARTIAL 30 HP, ALLEN BRADLEY 1395 DRIVES

AUTOVAR, 600KVAR, 480 VOLTS, 3 PHASE, 60 HERTZ,
POWER CAPACITOR BANK, 12 STAGE,
CAT#600TPCSE431, SERIAL# 9223162 - **NEW CONDITION!**

SODIUM LIGHTS - \$75.00 EACH

QTY. 120

GENERAL ELECTRIC 1,000 WATT 480 AC VOLT 4.2 START AMP 2.3 RUN AMP BUL #S52

QTY. 65

HUBBELL 1,000 WATT 480 AC VOLT START AMP N/A 2.3 RUN AMP BUL # N/A

HYDRAULIC POWER UNITS

| MFG. | PUMP SIZE | RESERVOIR | QTY. |
|--|-----------------|--------------|------|
| TELCO #107713-000-00 #107714-000-00 | 100 PSI 30 GPM | 150 GALLON | (2) |
| VICKERS #107287-000-00 | 2000 PSI 60 GPM | 3,500 GALLON | (2) |
| TELCO #107715-000-00 | 2000 PSI | 150 GALLON | (1) |

PLC CARDS & ELECTRONIC DRIVES

| QTY. | MFG. | PART NO. | DESCRIPTION |
|------|------------------|---------------|----------------------------------|
| 1 | ALLEN BRADLEY | 1785-L20B D | PLC-5/20 PROCESSOR MODULE |
| 1 | ALLEN BRADLEY | 1771-IFE A | 12 BIT ANALOG INPUT MODULE |
| 5 | ALLEN BRADLEY | 1771-IFE | 12 BIT ANALOG INPUT MODULE |
| 2 | ALLEN BRADLEY | 1771-IXE | THERMOCOUPLE/MILLIVOLT INPUT MOD |
| 1 | ALLEN BRADLEY | 1771-IXE B | THERMOCOUPLE/MILLIVOLT INPUT MOD |
| 1 | ALLEN BRADLEY | 1771-IXE C | THERMOCOUPLE/MILLIVOLT INPUT MOD |
| 1 | ALLEN BRADLEY | 1771-DA | ASC11 I/O MODULE |
| 1 | ALLEN BRADLEY | 1771-OFE1 | ANALOG OUTPUT MODULE |
| 1 | ALLEN BRADLEY | 1771-OFE2 | ANALOG OUTPUT MODULE |
| 2 | ALLEN BRADLEY | 1771-OFE2 (B) | ANALOG OUTPUT MODULE |
| 2 | ALLEN BRADLEY | 2760-RB (A) | FLEXIBLE INTERFACE MODULE |
| 2 | ALLEN BRADLEY | 1775-L3 | MAIN PROCESSOR |
| 2 | ALLEN BRADLEY | 1775-MED | ERROR CORRECTING 128K |
| 1 | ALLEN BRADLEY | 1775-P3 | POWER SUPPLY |
| 2 | ALLEN BRADLEY | 1775-S4A(B) | I/O SCANNER PROGRAM. INTERFACE |
| 2 | ALLEN BRADLEY | 1775-S5 | I/O SCANNER COMM. ADAPTER |
| 3 | GENERAL ELECTRIC | IC600BF941K | 0-10V OUTPUT |
| 1 | GENERAL ELECTRIC | IC600BF832K | 115 VAC INPUT |
| 1 | GENERAL ELECTRIC | IC600CB526N | EXP. LOGIC CONTROL |
| 1 | GENERAL ELECTRIC | ICC600LX624L | 24K MEMORY |
| 2 | GENERAL ELECTRIC | IC600BF900L | I/O XMTR |
| 1 | GENERAL ELECTRIC | IC600BF929K | 10-V - 50V SOURCE |
| 1 | GENERAL ELECTRIC | IC600PM500K | POWER SUPPLY |
| 1 | RELIANCE | 57404-2C | NETWORK COMMUNICATION MODULE |
| 4 | RELIANCE | 57404-1E | NETWORK COMMUNICATION MODULE |
| 5 | RELIANCE | 57405-C | DRIVE ANALOG I/O |
| 5 | RELIANCE | 57406-F | DRIVE CONTROLLER MODULE |
| 2 | RELIANCE | 57407-4D | 68000 CPU MODULE |
| 6 | RELIANCE | 57407-4F | 68000 CPU MODULE |
| 3 | RELIANCE | 57411-2 | RESOLVER INPUT |
| 1 | RELIANCE | 57411-2D | RESOLVER INPUT |
| 2 | RELIANCE | 57413-C | COMMUNICATIONS MEMORY MODULE |
| 1 | RELIANCE | 57414-1B | MODBUS GATEWAY MODULE |
| 1 | RELIANCE | 57414-1F | MODBUS GATEWAY MODULE |
| 3 | RELIANCE | 57410 | ISOLATED ANALOG OUTPUT |
| 6 | RELIANCE | 57491 | 275W POWER SUPPLY |

MAINTENANCE

RECTIFIERS & DC DRIVES

| HP | AC/DC VOLTS | MFG. | TYPE |
|---------|-------------|---------------|--|
| 1500 HP | 650 VDC | SIEMANS | REGENERATIVE/ REVERSING NEW! |
| N/A | 230/460 | ALLEN BRADLEY | 1397 |
| 30 HP | 230/240 | ALLEN BRADLEY | 1395 |
| 100 HP | 230/240 | ALLEN BRADLEY | 1395 |
| 30 HP | 220/500 | ALLEN BRADLEY | SCR |
| 30 HP | 220/600 | ALLEN BRADLEY | 1395 |
| 30 HP | 200-500/600 | EUROTHERM | DC-590 |
| 300 HP | 240 | RELIANCE | AUTOMAX |
| 1500 HP | 600/650 | RELIANCE | DCS |

TRANSFORMERS (DRY TYPE)

| KVA | MFG. | PRIMARY VOLTAGE | SECONDARY VOLTAGE |
|-----|-------------------|-----------------|-------------------|
| 14 | OLSUN | 460 | 230/133Y |
| 15 | MATRA | 2400 | 480 |
| 21 | RELIANCE | 460 | 230 |
| 30 | SIEMENS | 480 | 277 |
| 30 | DOGNAX | 480 | 415Y/240 |
| 42 | ENETICS | 480 | 240Y |
| 48 | NIAGRA | 480 | 240Y |
| 65 | GE | 460 | 230Y/152 |
| 68 | MATRA | 440 | 90Y/52 |
| 86 | GE | 460 | 230 |
| 98 | MATRA | 440 | 130Y/75 |
| 150 | WESTINGHOUSE | 460 | 230Y/153 |
| 167 | WESTINGHOUSE | 12470Y/7200 | 480/240 |
| 175 | GE | 60 | 230Y/133 |
| 200 | GE | 460 | 266 |
| 225 | ABB | 13,800 | 480/277 |
| 225 | GE | 7200 | 480 |
| 300 | WESTINGHOUSE | 12470/7200 | 480Y/277 |
| 300 | VANTRAN | 6900 | 480Y/277 |
| 330 | FEDERAL PACIFIC | 2300 | 230Y/133 |
| 330 | FEDERAL PACIFIC 4 | 80 | 480 |
| 500 | GE | 2400 | 208/120 |
| 500 | GE | 2400 | 240 |
| 500 | GE | 13800 | 480 |
| 750 | GE | 2400 | 240 |

MILL MOTOR COUPLINGS

| MFG. | SIZE | TYPE | BORE |
|---------|------|-------|----------|
| FALK | 9 | FLEX | 603-604 |
| FALK | 3 | FLEX | 608 |
| FASTS | 3 | FLEX | STRAIGHT |
| KOPPERS | 2 | RIGID | STRAIGHT |
| KOPPERS | 2 | FLEX | 602 |
| KOPPERS | 2.5 | FLEX | 606 |
| KOPPERS | 2.5 | FLEX | 608 |
| KOPPERS | 3 | RIGID | 608 |
| KOPPERS | 3 | FLEX | 608 |
| KOPPERS | 3 | FLEX | 612 |
| KOPPERS | 4 | FLEX | 612 |
| KOPPERS | 4 | FLEX | STRAIGHT |
| KOPPERS | 5 | FLEX | 618 |
| WALDRON | 1.5 | FLEX | STRAIGHT |
| WALDRON | 1.5 | FLEX | 602 |
| WALDRON | 2.5 | FLEX | 606 |
| WALDRON | 3 | FLEX | STRAIGHT |
| WALDRON | 3.5 | FLEX | 608 |
| ZURN | 2 | FLEX | 602 |
| ZURN | 3 | FLEX | 610 |
| ZURN | 3 | FLEX | 612 |
| ZURN | 3 | FLEX | 608 |
| ZURN | 3 | FLEX | STRAIGHT |
| ZURN | 3 | FLEX | MC50 |
| ZURN | 5 | FLEX | 620 |

MAINTENANCE

PUMPS

HIGH PRESSURE PUMPS

| | | | | | |
|--|------|----------------|------|----|-----|
| TRITAN #107828-000-00 | 30 | GPM @ 2000 PSI | 40 | HP | (1) |
| WILSON SNYDER #107424-000-00 | 750 | GPM @ 1700 PSI | 1500 | HP | (1) |
| WILSON SNYDER #107560-000-00 #107561-000-00 | 1700 | GPM @ 2000 PSI | 2500 | HP | (1) |

HORIZONTAL PUMPS

| | | | | | |
|--|------|----------------|-----|----|-----|
| WORTHINGTON #107635-000-00 TO #107638 | 400 | GPM @ 225' THD | 50 | HP | (4) |
| GORMANO-RUPP#107717 #107716 | 700 | GPM @ 97' THD | 40 | HP | (2) |
| GOULDS #107685-000-00 TO #10786 | 950 | GPM @ 350' THD | 125 | HP | (2) |
| ALLIS CHALMERS #107407-000-00 | 3600 | GPM @ 289' THD | | | (1) |

VACUUM PUMPS

| | | | | | |
|---------------------------------|----|-------------------------|--------------|--|-----|
| NASH ENG. #107639-000-00 | 70 | GPM @ 2600 CFM @ 25" HG | MODEL CL3003 | | (1) |
| NASH ENG. #107737-000-00 | 70 | GPM @ 2400 CFM @ 24" HG | MODEL CL3002 | | (1) |
| NASH ENG. #107754-000-00#107738 | 40 | GPM @ 1500 CFM @ 22" HG | MODEL CL2002 | | (2) |

VERTICAL PUMPS

| | | | | | |
|----------------------------------|------|------------------|-----|----|-----|
| JOHNSTON #107609-000-00 | 80 | GPM @ 30' THD | 1 | HP | (1) |
| GOULD #107674-000-00 | 350 | GPM @ 170' THD | 25 | HP | (1) |
| JOHNSTON #107606-000-00 | 1100 | GPM @ 75' THD | 125 | HP | (1) |
| JOHNSTON #107607-000-00 #107608 | 1500 | GPM @ 40' THD | 40 | HP | (2) |
| JOHNSTON #107605-000-00 #107604 | 1600 | GPM @ 64' THD | 200 | HP | (2) |
| LAWRENCE #100325-000-00 #100326 | 2500 | GPM @ 104' THD | 100 | HP | (2) |
| FLOWAY #104558, #104557, #104556 | 6000 | GPM @ 185' THD | 350 | HP | (3) |
| UNION #104315-000-00 | 7000 | GPM @ 173' FT HD | 400 | HP | (1) |

STRAINERS

16" S.P. KINNEY

150 PSI MODEL A, MFG. 1995
#104365-000-00

24" S.P. KINNEY

60 PSI MODEL A1-24, MFG. 1997
#104364-000-00

30" S.P. KINNEY

60 PSI MODEL A1-30, MFG. 1997
#104316-000-00

SEPARATORS

(2) 20 GPM OIL SEPARATORS #104340-000-00 #104340-001-00

GEAR REDUCERS

| | | | | | |
|---|-------------------|----------|-----------|-----|-------|
| 8 HP #106473-000-00 | HORSBURGH & SCOTT | 40:1 | 870 | RPM | INPUT |
| 14 HP #109867-000-00 | HORSBURGH & SCOTT | 10:1 | 870 | RPM | INPUT |
| 15 HP #109867-000-00 | FALK | 6.267:1 | 1150/2300 | RPM | INPUT |
| 18.9 HP #106216-000-00 | HORSBURGH & SCOTT | 5.5:1 | 850 | RPM | INPUT |
| 20 HP #101649-000-00 | FALK | 6.267:1 | 1150/2300 | RPM | INPUT |
| 20 HP #106608-000-00 | MARLEY | 4.105:1 | 1200 | RPM | INPUT |
| 25 HP #107180-000-00 | NUTTALL | 61.107:1 | 1160 | RPM | INPUT |
| 28.9 HP #106215-000-00 | HORSBURGH & SCOTT | 7.9:1 | 650 | RPM | INPUT |
| 43.5 HP #106218-000-00 | HORSBURGH & SCOTT | 5.4:1 | 1000 | RPM | INPUT |
| 46 HP #107380-000-05 | MITSUBISHI | 15:1 | 1130/905 | RPM | INPUT |
| 50.8 HP #107182-000-05 | D.O. JAMES | 285.82:1 | 1750 | RPM | INPUT |
| 60 HP #106018-000-00 | D.O. JAMES | 4.95:1 | 850 | RPM | INPUT |
| 60 HP #109866-000-00 | FOOTE JONES | 25.6:1 | 1740 | RPM | INPUT |
| 100 HP #107586-000-00 | FALK | 38.82:1 | 1750 | RPM | INPUT |
| 100 HP #106019-000-00 | D.O. JAMES | 6.06:1 | 1150 | RPM | INPUT |
| 100 HP #101728-000-05 | HORSBURGH & SCOTT | 7.88:1 | 870 | RPM | INPUT |
| 150 HP #106020-000-00 | D.O. JAMES | 6.37:1 | 1150 | RPM | INPUT |
| 150 HP #107623-000-00 | LUFKIN | 38.75:1 | 1170 | RPM | INPUT |
| 250 HP #107323-000-00 | D.O. JAMES | 6:1 | 500 | RPM | INPUT |
| 300 HP #107324-000-00 | HORSBURGH & SCOTT | 2.4:1 | 300/1280 | RPM | INPUT |
| 300 HP #107339-000-00 | FALK | 3.082:1 | 400/1200 | RPM | INPUT |
| 480 HP #107541-000-00 | HORSBURGH & SCOTT | 25.69:1 | 420 | RPM | INPUT |
| 500 HP #107631-014-00 | LOEWY | 13.6:1 | 720 | RPM | INPUT |
| 530 HP #107304-023-00 | FALK | 5.44:1 | 1780 | RPM | INPUT |
| 600 HP #107648-000-00 | HAMILTON | 10.63:1 | 320 | RPM | INPUT |
| (2) 600 HP #107528-000-00 #107527-000-00 | PHILADELPHIA | 7.2:1 | 900 | RPM | INPUT |
| 1000 HP #109791-000-00 | FALK | 1.811:1 | 235 | RPM | INPUT |
| 1000 HP #107652-000-00 | HORSBURGH & SCOTT | 5:1 | 600/1200 | RPM | INPUT |
| 1500 HP #107652-000-00 | WILSON | 7.51:1 | 50/900 | RPM | INPUT |

SPEED INCREASERS

| | | | |
|------------------------------|--------|----------|----------------------------------|
| (2) 600 HP 1750 RPM INPUT | MORGAN | 1.084:1 | #107437-000-00 #107438-000-00 |
| 2500 HP 500/950 RPM INPUT | MORGAN | 2.094:1 | #107433-026-00 |
| 2540 HP 1780 RPM INPUT | MORGAN | 2.193:1 | #107562-026-00 |
| 14,600 HP 875 RPM INPUT | MORGAN | 2.4706:1 | #107317-026-00 |
| 14,600 HP 875 RPM INPUT | MORGAN | 2.4706:1 | #107317-026-00 |
| 14,600 HP 875 RPM INPUT | MORGAN | 2.4706:1 | #107317-026-00 |

45/60 HP TEXTRON RIGHT ANGLE GLEARBOX

**58.33 OUTPUT RPM
CONE GEAR TYPE
SINGLE REDUCTION
3" OUTPUT SHAFT DIAMETER**
#110135-000-00

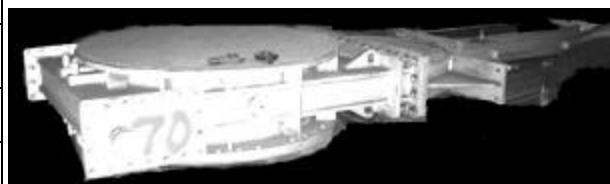
**WE HAVE MANY
MORE GEAR
REDUCERS IN
STOCK!**

**CALL US TODAY!
(412) 963-1111**

MAINTENANCE

VALVES (INCLUDING FOR USE WITH BLAST FURNACES)

| | |
|-----|---|
| (1) | 12" AVK MANUALLY OPERATED GATE VALVE #104335-000-00 |
| (1) | 16" DEZURIK DUST CATCHER VALVE #104333-000-00 |
| (1) | 20" SOMET SOLVAY GATE VALVE #104336-000-00 |
| (2) | 24" FLOW-TECH BUTTERFLY VALVE #104332-000-00 |
| (1) | 30" BAILEY MOTOR OPERATED MIXER VALVE #104320-000-00 |
| (3) | 36" SP KINNEY BURNER VALVE #104319-000-00 |
| (1) | 36" BAILEY COLD BLAST VALVE #104321-000-00 |
| (1) | 42" SP KINNEY WATER COOLED STOVE VALVE #104337-000-00 |



36" BURNER VALVE

TONGS

| CAPACITY | MFG | SERVICE | OPERATION |
|---|---------------|------------------------|----------------------|
| 4 TON #111056-000-00 | DOWER | | SCISSOR |
| 7.5 TON #107594-00-00 | HEPPENSTALL | EYE VERTICAL COIL | SCISSOR |
| 7.5 TON #111051-000-00 | ACCO MANSAYER | EYE VERTICAL COIL | SCISSOR |
| 15 TON #107863-000-00 | VOEST-ALPINE | EYE VERTICAL COIL | SCISSOR |
| 15 TON #111050-000-00 | HEPPENSTALL | EYE VERTICAL COIL | SCISSOR |
| 15 TON #107862-000-00 | VOEST-ALPINE | EYE VERTICAL COIL | SCISSOR |
| (3) 20 TON #107856-000-00 | VOEST-ALPINE | EYE VERTICAL COIL | SCISSOR |
| 20 TON #107305-000-00 | HEPPENSTALL | EYE VERTICAL COIL | MOTORIZED |
| 25 TON #107688-000-00 #107689-000-00 | ACCO | EYE HORIZONTAL COIL | MOTORIZED TELESCOPIC |
| 100 TON #107670-000-00 | HEPPENSTALL | SINGLE POINT INGOT | SCISSOR |
| (16) 13" OPENING | | HORIZONTAL ROUND | SCISSOR |

SCRAP CHOPPERS

YODER 66" WIDE X 0.125" THICK
#107340-002-00 (1575 C 3 MM)

(2) WEAN 0.375" X 24" TO 74" WIDE
#107632-000-00 (9.5 X 508/1880 MM)
#107633-000-00

MOELLER 15.75" WIDE X 0.79" THICK
NEUMANN (400 X 20 MM)
#111091-000-00

ROLL GRINDERS

CHUBU KOKI ROLL LATHE, CR-350
ROLL DIA. 13.75" , BED LENGTH EQUALS BAR
SIZ MILL #107837-024-00

KOCKS ROLL GRINDER, FOR RING ROLL DIA.
14.5" DIA. ROLL, BED LENGTH EQUALS BAR
SIZING MILL #100350-000-00

WELDON HYDRUALICS, FOR RING ROLL DIA
22" DIA. ROLL, BED LENGTH EQUALS BAR SIZING
MILL #107819-000-00

SPREADER BEAMS

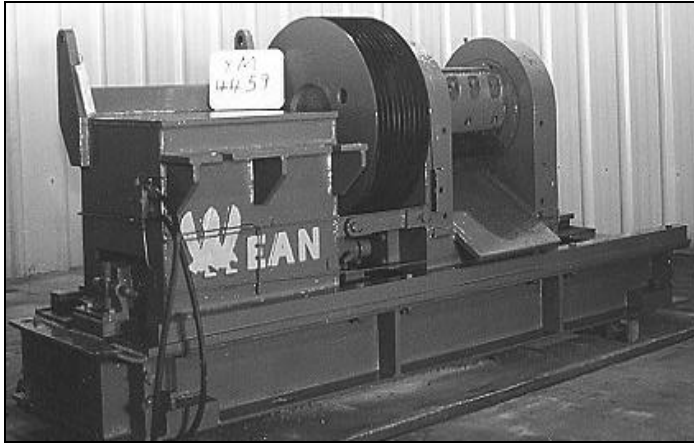
50 TON 21' LONG DRAFTO #107302-000-00

(2) 15 TON 16' LONG DRAFTO #111611-000-00
#111612-000-00

(2) 15 TON 29' LONG NSW S #112209-000-00
#112210-000-00

(4) 10 TON 6' LONG #107331-000-00 TO
#107334-000-00

5 TON 9' LONG CADY #107860-000-00



WEAN SCRAP CHOPPER

VALVES

(12) NIBCO 3" GATE #111617-000-00
TO #111617-000-10
#107415-000-00 TO

(6) HUNT 4" DESCALE #107418-000-00
#107422-000-00
#107423-000-00

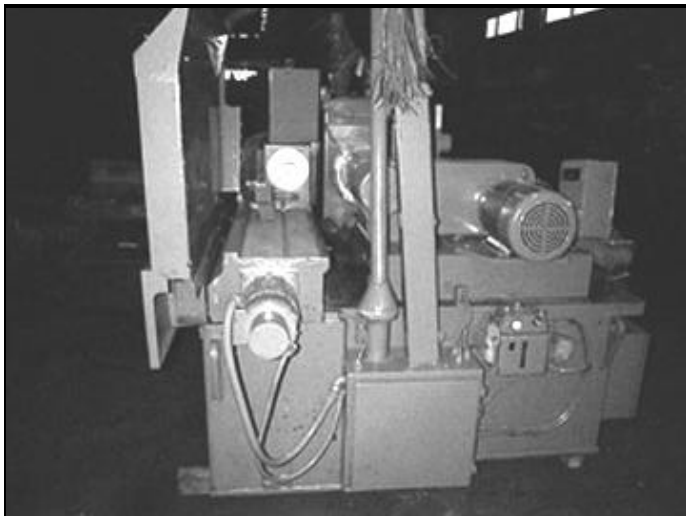
(5) 12" CHECK #112262-100-00
TO #112266-000-00

(5) KEYSTONE 12" BUTTERFLY #112262-000-00 TO
#112266-000-00

(1) 14" CHECK #112267-100-00

(1) DEZUIRK 14" KNIFE GATE #109976-000-00

(1) KEYSTONE 14" BUTTERFLY #112267-000-00



WELDON HYDRUALICS ROLL GRINDER

MAINTENANCE

TABLE ROLLS

| | | | | |
|-----------------------------|---|---|---|-------------------------------|
| QTY. (50) #107671-000-00 | 10.5" X 102" (267 X 2590 MM) SCHLOEMANN | INDIVIDUALLY DRIVEN COMPLETE WITH MOTOR AND GEARBOX | 1.23 KW, 1000 RPM 300V DC, TYPE GKE 52A | 75 - 135 FPM (22 - 41 MPM) |
| QTY. (18) #104560-000-00 | 13" X 18" (330 X 457 MM) BIRDSBORO | DRIVE SHAFT DIA. 5-3/8" | 18 ROLLS TOTAL 14 ROLLERS WITH PILLOW BLOCK BEARINGS | |

TABLES

| ROLL FACE | ROLL DIA. | LENGTH | MFG. |
|-----------|-----------|--------|-----------------------------|
| 15.75" | 11.75" | 19' | DANIELI #107845-000-00 |
| 15.75" | 11.75" | 88' | DANIELI #107772-000-00 |
| 19.75" | 4.25" | 30' | KALAMAZOO 107537-003-00 |
| 19.75" | 4.25" | 31' | KALAMAZOO #107537-004-00 |
| 30" | 14" | 86' | BIRDSBORO #104538-000-00 |
| 36" | 18" | 38.5' | ECOLAIR #107653-001-00 |
| 38" | 12" | 43' | BLAWKOX #112397-000-00 |
| 39" | 14" | 30' | BIRDSBORO #107477-000-00 |
| 40" | 14" | 115' | BIRDSBORO #110573-000-00 |
| 44" | 14" | 18' | BIRDSBORO #107479-000-00 |
| 44" | 14" | 18' | BIRDSBORO #107480-000-00 |

TABLES

| ROLL FACE | ROLL DIA. | LENGTH | MFG. |
|-----------|-----------|--------|------------------------------|
| 48" | 14" | 30' | BIRDSBORO #107478-000-00 |
| 48" | 14" | 30' | BIRDSBORO #107475-000-00 |
| 48" | 14" | 30' | BIRDSBORO #1074765-000-00 |
| 68" | 14" | 39' | UNITED ENG #111195-500-00 |
| 68" | 14" | 39' | UNITED ENG #111195-600-00 |
| 68" | 14" | 39' | UNITED ENG 111195-400-00 |
| 88" | 14" | 22' | UNITED #107360-000-00 |
| 96" | 20" | 21' | MESTA #107404-000-00 |
| 96" | 20" | 29' | MESTA #107402-000-00 |
| 96" | 20" | 29' | MESTA #107403-000-00 |
| 104" | 16" | 30' | UNITED #111195-000-00 |
| 104" | 16" | 30' | UNITED ENG #111195-300-00 |

MACHINE TOOLS / ROLL LATHES

| | |
|---|--|
| CORREA MILLING MACHINE #107814-000-00 | CRAWFORD SWIFT LATHE MODEL 25CR #107820-000-00 |
| WELDON ROLL GRINDER MODEL APG1632 (FOR ROD MILL, ROD BLOCK CARBIDE RING ROLLS) #107819-000-00 | JONES & JAMSON THREAD AND FORM GRINDER WITH ELECTRICAL CONTROLS, MODEL 410 #107626-000-00 |
| CHUBU KOKI ROLL LATHE MODEL CR -350 107837-024-00 | |

LAB / MEASURING EQUIPMENT

| | |
|--|--|
| ARL 8680XRF SIMULTANEOUS / SEQUENTIAL X-RAY SPECTROMETER #103103-000-00 | PERKIN ELMER MODEL 3110 ATOMIC EMISSION SPECTROMETER #107693-000-00 |
| ARL OPTICAL EMISSION SPECTROMETER #105731-000-00 | SPECTRO T-07 SPECTROMETER #107735-000-00 |
| BAIRD DV2 SPECTROMETER #104407-000-00 | BAIRD PORTABLE SPECTROMETER #104408-000-00 |
| 400K SUPER L TINIUS OLSEN TENSILE TESTER #104388-000-00 | 120,000 PSI SATEC TENSILE TESTER M120HVL/1256 #107865-000-00 |
| 5" DIA. MITSUBISHI ULTRASONIC TESTER FDA-130 RB #110854-000-00 | BAUSH AND LOMB OPTICAL COMPARATOR #104389000-00 |

MISCELLANEOUS EQUIPMENT

| | |
|--|---|
| INGERSOL MILLING MACHINE 42" X40" TABLE #11132-000-00 | (2) PAUL WURTH TAP HOLE DRILLS (FOR BLAST FURNACE) #107696-000-00 #107697-000-00 |
| FABRIS ROLLER GUIDES (FOR BAR MILL) #107640-000-00 | INKJET PRINTER WIEDENBACH STENCILER #100349-001-00 |
| 30,000 CFM S.P. KINNEY BURNER #104323-000-00 | |

MELT SHOP

MELT SHOP

CAPACITY: 850,000 MTPY

(2) EAF FURNACE (1) 20' DIA. (6.1 M) 120 TON HEAT

FEATURES

- LADLE MET STATION
- BILLET CASTER
- BLOOM CASTER

#110212-001-00

100 TON AOD VESSEL

100 TONS PER HEAT

#108452-000-00

BLAST FURNACE

| | | |
|------------|--------------------------|----------------|
| PAUL WURTH | 1430 TPD 17' DIA. HEARTH | #109516-003-00 |
| PAUL WURTH | 3500 TPD 17' DIA. HEARTH | #109516-002-00 |

BUCKET TRANSFER CAR

120 TON STEL-TECH SCRAP BUCKET, MOTORIZED, FLAT WITH SCRAP BUCKET LOCATING BRACKETS, 50 FPM, 19' 10" LONG X 12'0" WIDE X 54.5" HIGH

#112479-500-00

CAR WINCH

| | | | |
|-------|----|--------------------------------------|-----|
| 50/65 | HP | FALK 1" DIA. CABLE #107496-000-00 | (1) |
|-------|----|--------------------------------------|-----|

CASTERS

VOEST ALPINE/DANIELI, SLAB, SINGLE STRAND, 40" TO 59" WIDE (1020 TO 1500 MM) 4" TO 6" THICK (102 TO 157 MM), 100 TON LADLE CAPACITY

#104424-000-00

BILLET, 3-STRAND 6.5" x 6.5" (165 X 165 MM), 30'/48' LONG (9.2/14.6 M), 100 TONS PER #108518-000-00

CONCAST/ROKOP, 6-STRAND, BILLET, 5" X 5" (127 MM) 10.43" X 4.75" (265 X 120 MM) #110212-000-00

(2) DANIELI, BILLET, 4-STRAND, 4.3" TO 5.5" SQ. WIDTH (110 TO 140 MM), 90 TON LALE #111616-000-00

CHARGING BUCKETS

| | | |
|------------------|--------------|----------------|
| (3) 3350 CU. FT. | LIFTING BALE | #107330-000-00 |
| (3) 2600 CU. FT. | LIFTING BALE | #112479-000-00 |
| 950 CU. FT. | J-HOOKS | #111608-000-00 |
| 750 CU. FT. | LIFTING BALE | #111607-000-00 |

CLAMSHELL BUCKETS

| | | |
|-------------|--------------------|----------------|
| 1 CU. YD. | ELECTRIC MOTORIZED | #107330-000-00 |
| 1 CU. YD. | TWO LINE WILLIAMS | #104559-000-00 |
| 1.5 CU. YD. | TWO-LINE | #111589-000-00 |
| 1.5 CU. YD. | TWO-LINE | #107497-000-00 |

LADLES

| | | | |
|---------|---------|----------------|---|
| 50 TON | MECCA | BOTTOM POURING | (4) #107600-000-00 TO #107604-00-00 |
| 99 TON | EVEX | BOTTOM POURING | (16) #111615-000-00 TO S111615-000-15 |
| 25 TON | WHITING | TEEMING | (3) #111609-000-00 #111610-000-00 #112269-000-00 |
| 110 TON | POLLOCK | BOTTOM POURING | (2) #104467-000-00 #104466-000-00 |
| 112 TON | POLLOCK | BOTTOM POURING | (1) #104468-000-00 |



LADLE METALLURGY STATION

**117 TONS
20 MVA**

#110212-003-00

ELECTRIC ARC FURNACES

| | | |
|------------------------|----------|--|
| 20' DIA (7) | 130 TONS | EBT SHAFT FCE #108581-000-00 |
| 20' DIA (7) | 125 TONS | BIRLEC #110212-002-00 |
| 20' DIA (7 M) | 110 TON | LECTROMELT/FUCHS #104427-000-00 |
| 16' DIA (4.87 M) | 62 TON | LECTROMELT/FUCHS NIKKO #109636-001-00 & #109636-002-00 |
| 17' DIA. (5.2 M) | 60 TON | VOEST-ALPINE #109883-000-00 |
| 17' DIA (5.2 M) | 55 TON | FUCHS #109636-004-00 |
| 12' DIA (3.66 M) | 24 TONS | LECTROMELT #109061-000-00 |
| (2) 9' DIA (2.74 M) | 10 TONS | LECTROMELT #111434-100-00 #111434-000-00 |

MELT SHOP COMPONENTS

ELECTRODE TORQUING SYSTEM:
24" DIAMETER CAPACITY,
9'4" W X 18'9" L X 5'10" H
#108617-000-00

BAR, ROD, STRUCTURAL & TUBE

BAR PEELER & TURNER

| | | |
|-----------------------------|---------------|----------------------|
| #1 MEDART #107568-000-00 | BAR PEELER | 2.5 (62 MM) CAPACITY |
|-----------------------------|---------------|----------------------|

DRIVES

| | | | | |
|---------|--------------|-----|----------|------|
| 2700 HP | 280 | RPM | ELLIOTT | (1) |
| 2000 HP | 690/ 1085 | RPM | WEST | (1) |
| 2000 HP | 650/ 1090 | RPM | GE | (3) |
| 1500 HP | 600 | RPM | WEST | (6) |
| 1250 HP | 250/ 660 | RPM | WEST | (1) |
| 700 HP | 500/ 1200 | RPM | BBC | (6) |
| 300 HP | 400 1600 | RPM | YASKAWA | (2) |
| 375 HP | 360/ 1080 | RPM | WEST REV | (4) |
| 375 HP | 360/ 1080 | RPM | GE REV | (10) |
| 250 HP | 440/ 1600 | RPM | GE REV | (2) |
| 200 HP | 300/ 900 | RPM | GE REV | (4) |

DRAWBENCH

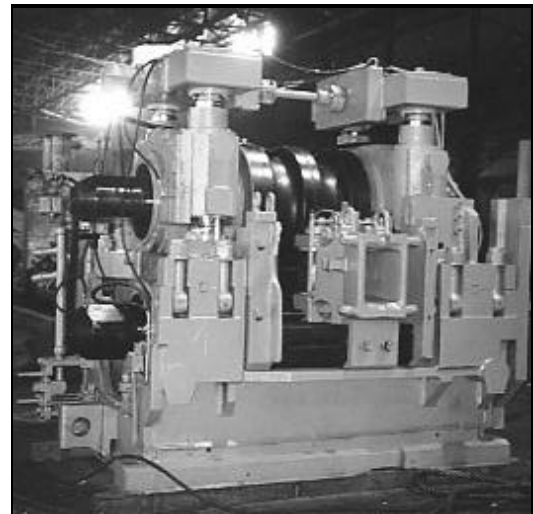
| | | |
|---------------------|---------------------|--------------------------------------|
| 50,000 CAP. PULL | SINGLE DRAW DIES | 50 FT. DRAW LENGTH #111178-000-00 |
|---------------------|---------------------|--------------------------------------|

SCHMIDT BAKING SODA SHOT BLASTER

#112208-000-00

3000 CFM BLOWER AT 1-3/4" IN H₂O

#109469-001-00



29.5 POMINI FARREL 2-HI MILL STAND

(3) SUNSTRAND BELT POLISHERS

8" WIDE X 132" LENGTH (203 X 3353 MM)
50 HP SIEMENS AC MOTOR

#107785-000-00

GRINDERS (BILLETS & ROUNDS)

| | |
|------------------|---|
| CENTRO MORGARDS: | 12.5" X 12.5" (312.5 X 312.5 MM) #104474-000-00 #104475T-000-00 |
| MIDWEST: | 2" TO 10" SQUARE (50 TO 250 MM) #107817-000-00 |
| CENTRO MORGARDS: | 7.5" TO 11.5" DIA. BAR (178 TO 292 MM) #107654-000-00 |
| SUNSTRAND | 1" TO 7" DIA X 360" (25.4 X 9144 MM) CENTERLESS GRINDER #112429-000-00 |
| CINCINNATI | 1" TO 10" BAR (24.5 TO 254 MM) TWIN GRIP, CENTERLESS #107712-000-00 |
| CINCINNATI | CINCINNATI: 1" TO 4.75" (25 TO 119 MM) #107741-000-00 |
| CENTRO MORGARDS: | 6" DIA X 40' LONG (152 MM X 12.9 M) #111361-000-00 |

KOCKS CARS

- 500 MM KOCKS 5-STAND CAR WITH 6 COMPLETE CASSETTES #107753-000-00
- 500 MM KOCKS 5-STAND CAR WITH 9 CASSETTES (6 COMPLETE, 1 HOUSING ONLY, 2 PARTIAL, ASSEMBLIES) #100351-001-00

MILLS

| | |
|----------------------------------|---|
| BAR & ROD MILL #109550-000-00 | 10" (254 MM) IHI 18-STAND BAR & ROD MILL, 150,000 TPY, SEMI-CONTINUOUS, WITH -STAND BLOCK & GARRET COILERS |
| BAR MILL: #107843-016-00 | 12" (300 MM) MUELLER NEUMANN 6-STAND FINISHING MILL, 2-HIGH VERTICAL AND HORIZONTAL HOUSINGLESS STANDS |
| BAR MILL #107498-000-01 | 14" (355 MM) MORGAN 16-STAND HORZ./VERT. MILL STANDS 420,000 TPY OF REBAR SIZE #5 TO #198 |
| BAR MILL #109636-003-00 | 17 STAND, 350,000 TPY, DANIELI NO-TWIST 6" SQUARE X 32' 10" LONG (150 MM X 10 M), 5/8" TO 2" (16/50 M) DIA CONTROLLED COOLED PRODUCT |
| BAR MILL #111106-000-00 | 19" (482 MM) NKK 10-STAND BAR MILL, HORZ/VERTICAL CONFIGURATION (4) ROUGHING, (6) INTERMEDIATE, STARTING SIZE 6.5" THICK X 6.5" WIDE (165 X |
| BLOOMING MILL #108372-000-00 | 40" X 96" (1016 X 2438 MM) BLAWKNOX , 750,000 TPY, ROLLER BEARING WITH SCARFER AND 180 SQ. INCH SHEAR |
| BLOOMING MILL #111195-000-00 | 44" X 104" (2640 MM) REVERSING, 2-HIGH BLOOM SLAB MILL, 32" WIDE BLOOMS (812 MM), 52" SLABS (1320 MM) WITH SCARFER AND CROP SHEAR |



12" MUELLER NEUMANN 6-STAND FINISHING MILL

BAR, ROD, STRUCTURAL & TUBE

ERW MILLS

| PRODUCT | FORMING SECTION | SIZING SECTION |
|---|--|--|
| 0.5" TO 1.63" DIA. TUBE (12.7 TO 41.4 MM) #111137-000-00 | (6) HORIZONTAL STANDS (5) VERTICAL STANDS | (3) THREE HORIZONTAL STANDS (3) VERTICAL STANDS |
| 1/2" TO 1-1/4" DIA. TUBE (12.7 TO 32 MM) 1/4" TO 1" PIPE (12.2 TO 25 MM) #111133-000-00 | (7) HORIZONTAL STANDS (7) VERTICAL STANDS | (3) HORIZONTAL STANDS (3) VERTICAL STANDS |
| 0.5" TO 1.5" DIA. TUBE (12.7 TO 38 MM) #111136-000-00 | (7) HORIZONTAL STANDS (6) VERTICAL STANDS | (3) HORIZONTAL STANDS (3) VERTICAL STANDS |
| 2" DIA. TUBE (51 MM) .5" to 1.5" PIPE (12.7 TO 38 MM) #111138-000-00 | (6) HORIZONTAL STANDS (7) VERTICAL STANDS | (3) HORIZONTAL STANDS (3) VERTICAL STANDS |
| .75" TO 3.00" DIA. TUBE (19 TO 76 MM) 1" PIPE (25.4 MM) #111141-000-00 | (5) HORIZONTAL STANDS (7) VERTICAL STANDS | (3) HORIZONTAL STANDS (3) VERTICAL STANDS |
| .75" TO 3.00" DIA. PIPE (19 TO 76 MM) #111142-000-00 | (7) HORIZONTAL STANDS (7) VERTICAL STANDS | (3) HORIZONTAL STANDS (3) VERTICAL STANDS |
| .5" TO 3.00" DIA. TUBE (12.7 MM TO 76 MM) #111143-000-00 | (7) HORIZONTAL STANDS (7) VERTICAL STANDS | (3) HORIZONTAL STANDS (3) VERTICAL STANDS |
| 1" TO 3" DIA TUBE (25 TO 76 MM) 3/4" TO 1-1/4" PIPE (19 TO 32 MM) #111139-000-00 | (6) HORIZONTAL STANDS (7) VERTICAL STANDS | (3) HORIZONTAL STANDS (3) VERTICAL STANDS |
| .75" TO 3" PIPE (19 TO 76 MM) #111140-000-00 | (5) HORIZONTAL STANDS (5) VERTICAL STANDS | (3) HORIZONTAL STANDS (2) VERTICAL STANDS |
| 1.5" TO 4" PIPE (38 TO 102 MM) #111144-000-00 | (6) HORIZONTAL STANDS (5) VERTICAL STANDS | (3) HORIZONTAL STANDS (3) VERTICAL STANDS |
| 2" TO 4" PIPE (50.8 TO 101.6 MM) #111145-000-00 | (7) HORIZONTAL STANDS (6) VERTICAL STANDS | (3) HORIZONTAL STANDS (3) VERTICAL STANDS |
| 1.9" TO 4.5" DIA. PIPE (48 TO 114 MM) #111134-000-00 | (8) HORIZONTAL STANDS (6) VERTICAL STANDS | (3) HORIZONTAL STANDS (3) VERTICAL STANDS |

MILL STANDS

| | |
|-------|--|
| 29.5" | (737 MM) POMINI FARREL 2-HIGH VERTICAL 29.5" DIA X 30" FACE (737 X 750 MM), ROLLER BEARING (2) #107748-001-00 |
| 29.5" | 737 MM POMINI FARREL 2-HIGH HORIZONTAL 29.5" DIA X 30" FACE (737 X 750 MM), ROLLER BEARING (2) #107748-002-00 |
| 24" | (350 MM) QUAD 2-HIGH VERTICAL, 24" DIA X 38" FACE (610 X 965 MM), ROLLER BEARING #109937-001-00 |
| 24" | (600 MM) LOEWY 3-HIGH BAR MILL REDUCTION OF BILLETS & BLOOMS, OPEN TOP CAST STEEL, 6" X 6" (150 X 150 MM) #107631-000-00 |
| 23" | (575 MM) SMS VERTICAL EDGING STAND 23" DIA X 10" FACE (575 X 250 MM), ROLLER BEARING (2) #100327-000-00 #100328-000-00 |
| 22" | (550 MM) MORGAN 2-HIGH VERTICAL, 24" DIA X 27" FACE (600 X 675 MM), ROLLER BEARING #107498-000-00 |
| 22" | (550 MM) MORGAN 2-HIGH HORIZONTAL, 24" DIA X 27" FACE (600 X 675 MM), ROLLER BEARING #107499-000-00 |
| 20" | (500 MM) DANIELI 3-HIGH HORIZONTAL, 20.5" DIA X 56" FACE (512.5 X 1400 MM), ROLLER BEARING #107569-000-00 |
| 19" | (475 MM) MORGAN POMINI 2-HIGH VERTICAL STANDS, 14" (350 MM) ROLL FACE (3) #107844-000-00 |
| 18.5" | (470 MM) KOCKS 5-STAND BLOCK, 18.5" DIA X 3.5", FACE (470 X 89 MM), ROLLER BEARING #100351-000-00 |
| 18" | (450 MM) MORGAN 2-HIGH VERTICAL, 19.5" DIA X 27" FACE (487 X 675 MM), ROLLER BEARING #107501-000-00 |
| 18" | (450 MM) MORGAN 2-HIGH HORIZONTAL, 19.5" DIA X 27" FACE (487 X 675 MM), ROLLER BEARING (2) #107502-000-00 #107500-000-00 |
| 16" | (400 MM) DANIELI VERTICAL EDGING STAND, 15" TO 23" DIA X 23-5/8" FACE (375 TO 575 DIA X 590 MM) #104528-000-00 |
| 16" | (400 MM) MORGAN 2-HIGH HORIZONTAL OR VERTICAL, 16.5" DIA X 27.6" FACE (412 X 690 MM), ROLLER BEARING #107507-000-00 |

MILL STANDS

| | |
|-------------|--|
| 16" | (400 MM) (3) MORGAN 2-HIGH VERTICAL AND (3) 2-HIGH HORIZONTAL STANDS, 16.5" DIA X 27.6" FACE (412 X 690 MM), ROLLER BEARING (6) #107503-000-00 TO #107508-000-00 |
| 14" | (350 MM) IHI 2-HIGH HORIZONTAL, HOUSINGLESS STANDS, 14" DIA X 31.5" FACE (350 MM) , ROLLER BEARING, COMPLETE WITH ROLLS, GUIDES AND BASE, WITH 2 CASSETTES (2) #107571-000-00 #107572-000-00 |
| 14" | (350 MM) MORGAN 2-HIGH VERTICAL, 14.2" DIA X 27.6" FACE (355 X 690 MM), ROLLER BEARING (2) #107511-000-00 #107513-000-00 |
| 14" | (350 MM) MORGAN 2-HIGH HORIZONTAL, 14.2" DIA X 27.6" FACE (355 X 690 MM), ROLLER BEARING (2) #107510-000-00 #107512-000-00 |
| 14" | (350 MM) MORGAN TEKISUN SIZING BLOCK, (3) STANDS-TWO HORIZONTAL, ONE VERT. 312 MM TO 350 MAX X 130 MM FACE #107837-000-00 |
| 14" | (350 MM) QUAD 2-HIGH HORIZONTAL, 14" DIA X 24" FACE (356 X 610 MM), ROLLER BEARING #109937-000-00 |
| 13.5" | (337.5 MM) MOELLER/NEUMANN 2-HIGH VERT. BOTTOM DRIVEN, HOUSINGLESS, 12.5"/13.6" DIA X 19.7" FACE (312 X 492 MM), ROLLER BEARING, PLUS SPARE CASSETTE #107843-001-00 |
| 13.5" | (337.5 MM) MOELLER/NEUMANN 2-HIGH HORZ. HOUSINGLESS, 12.5/13.6" DIA X 19.7" FACE (312 X 492 MM) ROLLER BEARING, PLUS SPARE CASSETTE #107843-009-00 |
| 13" | (325 MM) MORGAN MERCHANT AND BAR 2-HIGH HORIZONTAL, 13 3/4" DIA X 20" FACE (343 X 500 MM), MORGONIL BEARING (5) #104565-000-00 TO #104569-000-00 |
| 12"/ 14" | (300/350 MM) UNITED 2-HIGH OPEN TOP WITH SCREWDOWN, SKF ROLLER BEARING (10) #107463-000-00 TO #107472-000-00 |
| 12" | (300 MM) MORGAN 2-HIGH, (2) VERTICAL, (2) HORIZONTAL, 12" DIA X 1.7" FACE (300 X 42 MM), ROLLER BEARING #107818-000-00 |
| 12" | (300 MM) DANIELI 2-HIGH HORIZONTAL, 12" DIA X 27.5 FACE (300 X 687.5 MM), ROLLER BEARING (2) #107574-000-00 #107575-000-00 |

BAR, ROD, STRUCTURAL & TUBE

PINION STANDS

| | | | |
|--------------|---|------------------|---------|
| 20" (500 MM) | 3-HIGH #107631-015-00 | LOEWY | 1500 HP |
| 18" (450 MM) | 2-HIGH #104499-004-00 | VOEST | 3400 KW |
| 18" (450 MM) | 3-HIGH #107569-004-00 | DANIELI | 2400 HP |
| 16" (400 MM) | 2-HIGH #107397-004-00 | (3) PHILADELPHIA | 600 HP |
| 16" (400 MM) | 2-HIGH #107646-004-00 | WILSON | 700 HP |
| 13" (330 MM) | 2-HIGH #104575-000 TO #104579-000-00 | (5) MORGAN | |
| 14" (350 MM) | 2-HIGH #107458-000-00 #107459-000-00 | (2) LUFKIN | |
| 10" (250 MM) | 2-HIGH #107547-000-00 | UNITED | 1250 HP |

PLANET DEFORMATION MACHINE

PLANET PRODUCTS CORP: #18 REBAR 2-1/4" DIA (56 MM), CNC HEAD, 8" (200 MM) DEFORMATION GENERATOR, TOOLING FOR #3 TO #11 REBAR
#107698-000-00

750 TON WILLIAMS WHITE GAG PRESS:

MANUFACTURED 1981 - **NEVER INSTALLED!**
HORIZONTAL BENDING AND STRAIGHTENING
PRESS, STROKE AT 40 PER MINUTE #107653-000-00

PINION STANDS (COMBINATION 2-HI)

| | | | |
|--------|--------------------------------|----------------|---------|
| 21.5" | FOOTE JONES #107498-004-00 | 143.27:1 RATIO | 300 HP |
| 20" | P.D. WESTERN #107346-000-00 | 5.4.36:1 RATIO | 2450 HP |
| 20" | *HAMILTON #107485-000-00 | 4.6:1 RATIO | 2150 HP |
| 18" | MORGAN/FJ #107386-000-00 | 30.51:1 RATIO | 600 HP |
| 18" | LUFKIN #107850-000-00 | 33.96:1 RATIO | 600 HP |
| 18" | LUFKIN #107849-000-00 | 22.44:1 RATIO | 600 HP |
| 16" | HAMILTON #107647-000-00 | 8.99:1 RATIO | 640 HP |
| 16" | HAMILTON #107644-000-00 | 7.33:1 RATIO | 640 HP |
| 16" | LUFKIN #107553-000-00 | 4.13:1 RATIO | 750 HP |
| 16" | LUFKIN #107551-000-00 | 3.24:1 RATIO | 750 HP |
| 16" | LUFKIN #107549-000-00 | 5.26:1 RATIO | 750 HP |
| 16" | HAMILTON #107651-000-00 | 5.61:1 RATIO | 750 HP |
| 14" | LUFKIN #107392-000-00 | 2.33:1 RATIO | 300 KW |
| 13.8" | IHI #107572-003-00 | 1.976:1 RATIO | 1000 HP |
| 13" | *FALK #107377-000-00 | 3.16:1 RATIO | 750 HP |
| 13" | LUFKIN #107377-000-00 | 2.375:1 RATIO | 750 HP |
| 13" | FOOTE JONES #107513-001-00 | 1.09:1 RATIO | 800 HP |
| 13" | FOOTE JONES #107511-001-00 | 1.39:1 RATIO | 800 HP |
| 13" | LUFKIN #107552-000-00 | 1.73:1 RATIO | 750 HP |
| 13" | LUFKIN #107550-000-00 | 1.73:1 RATIO | 750 HP |
| 12.75" | MRGARDHMR #107391-000-00 | 2.98:1 RATIO | 300 KW |

* INDICATES 3-HI STAND

38" BIRDSBORO BEAM SLITTER

- 6" - 37" BEAM DEPTH
- 3/4" THICK WEB
- 31" KNIFE DIAMETER

#107495-000-00

4 ARM POMINI COIL TURNSTILE

4 COILS @ 4,000 LBS. MAX

COIL SIZE: 31.5" ID X 47.25" OD
X 40" HIGH

BAR SIZES: 3/16" TO 1-3/16" DIA.
& SQUARE

DIMENSIONS 9' 0" HIGH
25' 6" DIA. WITH ARMS

#100331-000-00

ROD BLOCK

6-STAND MOELLER NEUMANN
NO-TWIST ROCK BLOCK

RING DIA. 6.7" (170 MM)

NEVER USED OR INSTALLED!

#110060-000-00

PINCH ROLLS

- POMINI, 7.75" (193 MM) BILLETS, 17-3/4" DIAMETER X 13-3/4" WIDE, (443 X 343 MM) MOVABLE TOP ROLL (HYDRAULIC) TYPE, (2) 15 KW MOTORS #107749-000-00

BAR, ROD, STRUCTURAL & TUBE

13.5" DIA (350 MM) 3-STAND PRECISION SIZING BLOCK (FOR BAR MILL)

- 1990 VINTAGE - MFG. MORGAN TEKISUN
- ONE BLOCK, THREE STANDS
- 26.4" (660 MM) CENTERS
- 2 HORIZONTAL - 1 VERTICAL
- 1-3/8" TO 3.5" (34 TO 87 MM) BAR CAPACITY
- 200 TO 700 FPM (60 TO 213 MPM)
- 312 MM MIN TO 350 MM MAX X 130 MM FACE
- 500 HP DC MOTOR
- 13.77" (350 MM) CHUBU KOKI ROLL LATH #107837-000-00

ROLLER GUIDES

| | | |
|--|--------------------------------|-----------|
| HOLLTECK #112272-700-00 | 2.5" X 12.5" | 4 ROLLERS |
| HOLLTECK #112399-000-00 | 4" TO 3" WIDE 2" TO 1" HIGH | 2 ROLLERS |
| HOLLTECK #112271-000-00 | 3.15" ANGLE | 3 ROLLERS |
| (7) FABRIS #107640-00000 THU #107640-006-00 | 3" PRODUCT | 2 ROLLERS |
| (4) MORGAN #107789-000-00 | 3.5" PRODUCT | 2 ROLLERS |
| (17) MORGAN #107791-000-00 | 1.75" PRODUCT | 2 ROLLERS |
| (7) MORGAN #107792-000-00 | 0.75" PRODUCT | 2 ROLLERS |
| (4) MORGAN #107793-000-00 | 2" PRODUCT | 2 ROLLERS |
| (4) MORGAN #107794-000-00 | 2" PRODUCT | 2 ROLLERS |
| (4) MORGAN #107795-000-00 | 3.5" PRODUCT | 2 ROLLERS |

SAWS

| | | |
|---------|--|--------------|
| 50" DIA | NIPPON #107838-000-00 | HOT ABRASIVE |
| 21" DIA | BEHRINGER #107816-000-00 | BAND SAW |
| 18" DIA | W.F. WELLS #104394-000-00 | BAND SAW |
| 18" DIA | MARVEL ARMSTRONG #107322-000-00 | HACK SAW |
| 18" DIA | MARVEL #107536-000-00 | BAND SAW |
| 18" DIA | MARVEL #104935-000-00 #107736-000-00 | HACK SAW |
| 12" DIA | KALAMAZOO #107537-000-00 | BAND SAW |

SHEARS (DOWN CUT)

| | | | |
|---------------------------|----------|-----------|-----------------|
| 500 TON #100346-000-00 | 55" WIDE | (1375 MM) | DANIELI |
| 200 TON #100349-000-00 | 66" WIDE | (1676 MM) | VOEST ALPINE |

(2) GUILLOTINE PORTABLE HYDRAULIC COLD BAR SHEARS

#107852-000-00 #107853-000-00

SHEARS (ROTARY)

| | |
|--------------------------|---|
| 17 IN ² | (109 CM2) FERRCO CROP & COBBLE 400 FPM (122 MPM) #107650-000-00 |
| 18 IN ² | (116 CM2) MORGAN CROP & COBBLE #107750-000-00 |
| 9 IN ² | 58 CM2) BIRDSBORO CROP & COBBLE 650 FPM (198 MPM) #107343-000-00 |
| 8 IN ² | (51 CM2) FERRCO/SCHLOEMANN CROP & COBBLE 200 FPM (60 MPM) #107540-000-00 |
| 7.5 IN ² | (48 CM2) DES-ENG-CON HOT FLYING CROP 364 FPM (110 MPM) #107432-000-00 |
| 7.0/ 2.0 IN ² | (45/13 CM2) BIRDSBORO COMBO HOT DIVIDING 1600/2000 FPM (487/609 MPM) #107534-000-00 |
| 3.5 IN ² | (22.5 CM2) DANIELI CROP 680 FPM (207 MPM) #107535-000-00 |
| 3.6 IN ² | (23 CM2) (2) MORGARDSHAMMAR DIVIDING CROP & COBBLE 1870 FPM #107564-000-00 #107563-000-00 |
| 3.5 IN ² | (22.5 CM2) DANIEL CROP 885 FPM (269 MPM) #107535-000-00 |
| 2.4 IN ² | (15.5 CM2) BANNING HOT FLYING 710 FPM (216 MPM) #107375-000-00 |
| 2 IN ² | (13 CM2) MORGARDSHAMMAR CROP 800 FPM (243 MPM) #107543-000-00 |
| 1.84 IN ² | (11.8 CM2) BIRDSBORO HOT FLYING 450 FPM, (137 MPM) #107461-000-00 |
| 1.76 IN ² | (11.3 CM2) MORGAN HOT DIVIDING 2800 FPM (853 MPM) #107520-000-00 |
| 1.5 IN ² | AETNA STARNDARD/POMINI HOT BAR 2000 FPM #107584-000-00 |
| 1.3 IN ² | MORGADSHAMMER DISC SAMPLING 2000 FPM #107565-000-00 |

STRAIGHTENERS (ROTARY)

#6 MEDART 2-ROLL: 1-1/2" TO 6" BAR (37.5 TO 150
MM) 20/180 FPM (6/55 MPM) #104476-000-00

#4 MEDART 2-ROLL: 5" BARS (125 MM) 6-5/8" X 3/8"
WALL TUBING (165 X 9 MM) #107842-000-00

BRONX PBR4 2-ROLL: 1/2" TO 2-1/4" BAR, (19 TO 57
MM) 50/100 FPM (15/30 MPM) #107841-000-00

MANNESMANN MEET 7-ROLL: 3/8" TO 1-1/2" BAR
(9 TO 37 MM) 200/600 FPM (60/182 MPM) #107695-000-00

SUTTON 5-ROLL: 1/2" TO 2-5/16" BAR
(13 TO 64 MM) 65/260 FPM (20/79 MPM) #107290-000-00

(SHAPE)

SMS 7-ROLL SINGLE PLANE:

15" @ 50 LB. CHANNELS (381 MM) , 8" X 1-1/8" EQUAL
ANGELS (203 MM X 28MM) , 9" X 3/8" PLATE (228 X 9.5
MM), 800 FPM (243 MPM), ROLL CONFIGURATION
4 OVER 3 #108741-000-00

NKK 7-ROLL MULTI-STRAND SINGLE PLANE:

3" ANGLE (75 MM), 3" CHANNEL (75 MM) #107624-000-00

KIESERLING 9-ROLL SINGLE PLANE:

2" SQUARE (50 MM), 2.2" HEX (55 MM), 2.2" ROUNDS
(55MM) #107731-000-00

UNITED VARIABLE PITCH 7-ROLL SINGLE PLANE:

15" STANDARD BEAMS (375 MM), 8" ANGLES
(200 MM), 15" CHANNELS (375 MM), 10" WIDE FLANGE
BEAMS (250 MM) CRANE RAILS & TRACK SHOES
#107337-000-00

D30L SUTTON 9-ROLL MULTI-STRAND SINGLE PLANE: 3" ANGLE (75 MM), 4" CHANNEL (100 MM)

#100348-000-00

SUTTON 2-PLANE SHAPE STRAIGHTENER:

1/4" X 1" TO 1-1/2" X 4" FLATS, 3/8" TO 1-1/4" HEX
3/8" TO 1-1/2" SQUARES, 3" ANGLES #107694-000-00

FLAT PRODUCT

ANNEALING FURNACES

(7) BELL TYPE UNITS
LEE WILSON

- HN GAS
 - 72" DIA (1830 MM)
 - BELL TYPE
 - SINGLE STACK
 - 20'4" HIGH (6 M)
 - 17'10" BELL (5 M)
 - NORTH AMERICAN BLOWERS
 - COOLING COVERS
 - BASES & MOTORS
 - BASE PLATES
 - INNER COVERS
- #108453-000-00

C-HOOKS

| CAPACITY | HOOK DEPTH | HOOK THROAT DEPTH |
|------------------------------|------------|-------------------|
| 20 TON #107832-000-00 | 42" | 21-1/2" |
| (3) 20 TON #107835-000-00 | 48" | 30-1/2" |
| 20 TON #109382-000-00 | 48" | 31" |
| 20 TON #107864-000-00 | 60" | 37" |
| 5 TON #111052-000-00 | 29-1/2" | 14" |
| 20 TON #107833-000-00 | 45" | 24" |
| 15 TON #107858-000-00 | 58" | 35" |
| 10 TON #111054-000-00 | 24" | 29" |
| 5 TON #111053-000-00 | 23-1/2" | 17-1/2" |
| 15 TON #111055-000-00 | 40" | 24" |

CARS (COIL & TRANSFER)

| | | |
|---|----------------|----------------------------|
| 12.5 TON #107356-000-00 | AETNA STANDARD | COIL |
| 20 TON #104313-000-00 | BLISS | NON-MOTORIZED COIL |
| (5) 30 TON #107451-000-00 | HERR VOSS | TOW BAR |
| 30 TON #107341-003-00 | BLAWKNOX | COIL |
| (2) 40 TON #107592-000-00 | ATLAS | MOTORIZED (2) |
| 40 TON #107483-000-00 | USS | MOTORIZED W/ROLL SADDLES |
| 150 TON #107854-000-00 | BOLTECH | MOTORIZED WITH LADLE RESTS |
| 130 TON #112481-000-00 | HAMILTON | MOTORIZED W/WEIGHING SYST. |
| (2) 200 TON #107544-000-00 #107545-000-00 | NATIONAL | MOTORIZED FLAT DECK |
| (2) 250 TON #104472-000-00 | ATLAS | MOTORIZED FLAT DECK |



40 TON ATLAS TRANSFER CAR

BELT WRAPPERS

| | | |
|--|--|---|
| 52" X .118" DEMAG (1300 X 2.95 MM) #107370-000-00 | 38" WEAN (965 MM) #107489-002-00 | 62" X 0.20" (1575 X 5.08 MM) #100334-000-00 |
|--|--|---|

LEVELERS (FOR PLATE/SHEET)

| MFG. | CAPACITY | WORK ROLLS | BACKUP ROLLS |
|---|--|---|--------------------------------------|
| 156" HEAD WRIGHTSON (3960 MM) #107444-001-00 | 142" WIDE (3607 MM) 0.197" TO 1" GAUGE (5 MM TO 25 MM) | 9" DIA X 156" (225 MM X 3900 MM) | 9.25" X 44" (231 MM X 1100 MM) |
| 153" SCHLOEMANN (3900 MM) #111387-000-00 | 144" WIDE TO 1.25" THICK (3650 MM WIDE TO 32 MM THICK) | 9.25" DIA X 153" LONG (235 MM X 3900 MM) | 9.5" DIA (242 MM) |
| 72" MCKAY (1800 MM) #107340-001-00 | 24" TO 62" WIDE (600 MM TO 1550 MM) 0.010" TO 0.125" THICK (.25 MM TO 3.125 MM) | 3-1/2" DIA X 72" (87.5 MM X 1800 MM) | 3-1/2" X 18" (87.5 MM X 450 MM) |
| 72" MCKAY (1800 MM) #107462-000-00 | 20" TO 64" WIDE (508 MM TO 1625 MM) 0.25" TO 1.1" GAUGE (6 MM TO 28 MM) | 9" DIA X 72" (229 MM X 1829 MM) | 9.25" DIA X 24" (235 MM X 610 MM) |

LEVELERS (FOR STRIP)

| MFG. | CAPACITY | WORK ROLLS | BACKUP ROLLS |
|---|---|---------------------------------------|--------------|
| 60" VOSS (1500 MM) #107676-000-00 | 22" TO 48" WIDE (558 MM TO 1220 MM) 0.005" TO 0.060" GAUGE (.127 MM TO 1.52 MM) | 1.56" DIA X 60" (39 MM TO 1500 MM) | 9 FLIGHTS |

SLITTING LINES

| MFG. | CAPACITY | COIL WEIGHT | ARBOR |
|--|---|---------------------------|-----------------|
| YODER #108742-000-00 | 36" X 0.010" TO 0.125" (914 MM X 0.254 TO 3.18 MM) | 21,000 LBS. (9,545 KG) | 6" (152 MM) |
| TORRINGTON #112474-500-00 | 36" X 0.045" TO 0.330" (914 MM X 1.14 MM X 8.38 MM) | 20,000 LBS. (9,070 KG) | 7" (180 MM) |
| PAXON #112475-000-00 | 48" X 0.024" TO 0.085" (1295 MM X .59 MM TO 4.75 MM) | 30,000 LBS (13,600 KG) | 6" (152 MM) |
| HERR-VOSS #107855-000-00 | 51" X 0.0235" TO .187 (1295 MM X .59 MM TO 4.75 MM) | 35,000 LBS (15,909 KG) | 10" (254 MM) |
| CINCINNATI / HERR VOSS #112474-000-00 | 72" X 0.05 TO 0.250 (1830 MM X 1.27 MM TO 6.35 MM) | 50,000 LBS (22,680 KG) | 8" (254 MM) |

FLAT PRODUCT

SHEET LIFTERS

| | | |
|---|---------------------|--------------------------|
| 20,000 LB #107328-000-00 | CULLEN FRIESTEDT | MOTORIZED (1) |
| 33,000 LB #100342-000-00 #100343-000-00 #100344-000-00 #100345-000-00 | BUSHMAN | SELF-LOCKING (4) GEAR |

78" TENSION LEVELING LINE

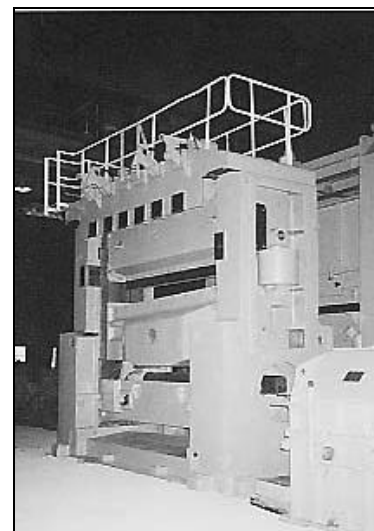
| | |
|---------------------------------------|--|
| PRODUCT: | 18" TO 73" WIDE (457 TO 1854 MM) 0.0066" TO 0.125" GAUGE (0.168 TO 3.2 MM) |
| ENTRY DRAG & EXIT PULL BRIDLES: | 4 ROLLS, 42" DIA (1066 MM) WITH 78" FACE (1980 MM) |
| TENSION LEVELER: | 4 CASSETTE UNIT - 2 UPPER AND 2 LOWER 1-3/4" DIA. WORK ROLLS (45 MM) 4-3/8" DIA. BACKUP ROLLS (110 MM) #112428-000-00 |

SHEAR LINES

| MFG. | ENTRY COIL | EXIT SHEET |
|---------------------------|--|------------|
| UNGERER #104432-000-00 | 61" X .024" TO .236" (1550 MM X .6 TO 6 MM) | 16' (5 M) |
| UNGERER #104435-000-00 | 59" TO .43" (1500 MM TO 11 MM) | 16' (5 M) |

SHEARS "COLD"

| | | |
|------------------------------------|-----------------------|-------------------------------------|
| 48" X .060" (1200 MM X 1.5 MM) | WEAN | DOUBLE CUT #107687-000-00 |
| 58" X .118" (1450 MM X 2.95 MM) | DEMAG | CROP #107368000-00 |
| 80" X .5" (2000 MM X 12.5 MM) | WEAN CUT-TO-LENGTH | UPCUT #107316-045-00 |
| 80" X .5" (2000 MM X 12.5 MM) | WEAN CROP | UPCUT #100316-046-00 |
| 84" X .375" (2100 MM X .375 MM) | WEAN CROP | UPCUT #107493-000-00 |
| 84" X .375" (2100 MM X .375 MM) | WEAN STRIP | UPCUT #107381-000-00 |
| 102" X 1" (2550 MM X 25 MM) | MOELLER NEWMAN | PLATE DOWN CUT #107405-000-00 |



140" DAVEY LOWEY SHEAR

SHEARS FOR "HOT"

| | | |
|--------------------------------|-------------|-------------------------|
| 140" x 1" (3500 MM X 25 MM) | DAVEY LOWEY | PLATE #107446-000-00 |
|--------------------------------|-------------|-------------------------|

MILLS (HOT) #104308-000-00

54" (1370 MM) MESTA HOT STRIP MILL

| | | | |
|------------------------|--|------------------------|--|
| MANUFACTURER: | UNITED/MESTA/DAVY | FINISHING MILL: | 25" X 49 X 56" (635 MM X 1244 X 1422 MM) 4-HIGH, 6-STAND UNITED |
| UPGRADES: | 1978, 1988 & 1996 | | |
| CAPACITY: | 900,000 TONS PER YEAR | | |
| TYPE: | SEMI-CONTINUOUS | STAND #1 DRIVE: | 3500 HP DC MOTOR 150/300 RPM 4.26:1 GEAR REDUCER AND PINION STAND |
| INPUT SLAB: | 25" MIN TO 50" MAX WIDTH (635 MM TO 1270 MM) 6" MIN TO 8.5" MAX THICK (76 MM TO 152 MM) | | |
| COIL SIZE: | 22" TO 49-3/4" WIDE (559 MM TO 1263 MM) .006 TO .30" GAUGE (1.422 MM TO 6.35 MM) | STAND #2 DRIVE: | 5000 HP DC MOTOR 150/300 RPM 3.17:1 GEAR REDUCER AND PINION STAND |
| SPEED: | 1965 FPM (950 M/MIN) | | |
| SCALEBREAKER: | ONE 2-HIGH 28" DIA X 56" W STAND (711 MM X 1422 MM) 800 HP AC MOTOR 12.2:1 GEAR REDUCER WITH 2-HIGH PINION STAND | STAND #3 DRIVE: | 5000 HP DC MOTOR 150/300 RPM 1.9:1 GEAR REDUCER AND PINION STAND |
| VERTICAL EDGER: | 34" X 17" FACE (863 MM X 431 MM) (2) 275 HP DRIVE MOTORS | STAND #4 DRIVE: | 5000 HP DC MOTOR 150/300 RPM WITH PINION STAND |
| DOWNCOILER: | SINGLE EXPANDABLE MANDREL (2) WRAPPER ROLL DESIGN 500 PIW 12 TONS APPROX. 275 HP DC MOTOR | STAND #5 DRIVE: | 3500 HP DC MOTOR 135/270 RPM WITH PINION STAND |
| ROUGHING MILL: | 39" X 54" X 58" (990 MM X 1370 MM X 1473 MM) 4-HIGH REVERSING, SINGLE STAND (2) 5000 HP MOTORS | STAND #6 DRIVE: | 3500 HP DC MOTOR 150/300 RPM WITH PINION STAND |



FLAT PRODUCT

MILLS (COLD)

| | | |
|---------------------------------|-----------------------------------|--|
| 10" (254 MM) #108486-000-00 | DAVY SENDZIMIR ZR-34-10 | 20-HIGH, 10" WIDE (254 MM), .060" GAUGE (1.5 MM), 2,500 LBS (1136 KG) STARTING COIL, .0004" (.010 MM) FINISHING COIL, 3/8" X 11" (9.52 MM X 279 MM) WORK ROLLS, 1.6" X 11" (40 MM X 279 MM) BACKUP ROLLS - ROLLER BEARING |
| 30" (750 MM) #104438-000-00 | BLISS | SINGLE STAND, 4-HIGH, 16" X 33" X 30" ROLLS (400 MM X 825 MM X 762 MM), EXPANDING MANDREL TYPE, PAYOFF REEL, TENSION REEL |
| 38" (965 MM) #108747-000-00 | STECKER | FINISHING REVERSING 4-HIGH, 18" TO 36" WIDE LOW CARBON STEELS (457 TO 914 MM), 18" TO 28" WIDE HIGH CARBON STEELS (457 TO 711 MM), 0.030" TO 0.160" (GAUGE), 21,000 LBS., WORK ROLLS, BACKUP ROLLS, ROLLER BEARING, HYDRAULIC CYLINDERS |
| 40" (1016 MM) #107659-000-00 | WATERBURY FARREL NON-REVERSING | SINGLE STAND, 2-HIGH, 30" X 40" (750 X 1000 MM), WORK ROLLS - ROLLER BEARINGS - NEVER INSTALLED |
| 42" (1016 MM) #108759-000-00 | LEWIS TEMPER | 2- HIGH TEMPER, 37" WIDE (940 MM), 0.0008" TO 0.125" GAUGE (0.2 TO 3.2 MM) STARTING AND FINISHING COILS, 30,000 LB., 22" DIA. X 42" FACE (559 X 1067 MM) WORK ROLLS, ROLLER BEARING |
| 54" (1370 MM) #108400-000-00 | BLISS NON-REVERSING TEMPER | SINGLE STAND, 4-HIGH, 21" X 54" X 53" (533 MM X 1371 MM X 1346 MM) 18 TO 48" WIDE (457 MM TO 1219 MM), .012 TO .125 GAUGE (0.30 MM TO 3.17 MM) 40,000 LBS (18,181 KG) STARTING COIL, GAUGE REDUCTION 1.5% FINISHING COIL, WORK ROLLS - ROLLER BEARING, BACKUP ROLLS - MORGOL BEARING |
| 83" (2108 MM) #104438-000-00 | WEAN UNITED HOUSING | 4-HIGH MILL STAND, HOUSINGS FOR 23" X 56" X 83" (584 MM X 1422 MM X 2108 MM) POST SIZE 1220 SQ. IN., WINDOW 77" WIDE X 21' HIGH (1955 MM X 6 M) |

MILLING MACHINE

INGERSOLL SLAB/INGOT SCALPER
2" TO 8" (50 TO 200 MM) THICK
26" TO 52" (650 TO 1300 MM) WIDE
18' (5,486 M) LONG SLABS
#100339-000-00

ANNEALING & TEMPER LINE

(3) 8" (203 MM) WIDE STRIP
ANNEALING & TEMPER LINE

5 TPH (4.54 MTPH)
#111614-000-00, #111613-000-00, #112261-000-00

50" (1270 MM) PAINT LINE

#108761-000-00

| | | | |
|---|--|--|---|
| YODER / STRILICH WAGNER | 48" X 0.01" TO .19" (1220 MM X 0.3 MM TO 5 MM) | 32 TO 82 FPM (10 TO 25 MPM) | 200' (61 M) |
| CLEANING SYSTEM: (4) 1188 GALLON (4500L) TANKS, 150 GPM PUMP SPRINKLER SYSTEM | CHEMICAL COATER: RUBBER AND STEEL ROLL SYSTEM, CHROMIUM APPLICATION USING PNEUMATIC SAND PIPER PUMP AND (2) PAINT FEEDERS, GRACO AUX. PAINT SYSTEM | PAINT COATER: R. WAGNER PAINTING SYSTEM USING (2) COATING ROLLS AND (2) PAINT FEEDERS, GRACO AUX. SYSTEM | PAINT DRYING FURNACE: 30' (9 M) LONG CONVECTION HEAT USING MAXON APX BURNERS, 175,000 TO 7,000,000 BTU/HR RATING |

PINCH ROLLS

| | | | |
|---------------------------|---|-----------------------------------|---|
| 1-3/4" WIDE (44 MM) | MORGAN #107643431-000-00, #107435-000-00 | 7-1/2" DIA. (190 MM) | 15 HP MOTOR FOR BOTTOM ROLL , 720 RPM |
| 8" WIDE (203 MM) | #107643-000-00 | 11" DIA. (279 MM) | HYDRAULIC MOTOR DRIVEN |
| 46" WIDE (1168 MM) | WEAN #107359-000-00 | 16"/18" DIA ROLLS (406/457 MM) | 2 HP MOTOR FOR BOTTOM ROLL |
| 60" WIDE (1524 MM) | AETNA STANDARD #107341-001-00 | 8" DIA ROLLS (203 MM) | 5 HP MOTOR 1800 RPM 73:1 |
| 76" WIDE (1930 MM) | STAMCO #107326-000-00 | 13"/12" DIA ROLLS (330/304 MM) | DESIGNED FOR 10 HP MOTOR |
| 80" WIDE (2032 MM) | WEAN #107306-001-00 | 14" DIA ROLLS (355 MM) | (2) 25 HP MOTORS 500/1800 RPM |
| (2) 80" WIDE (2032 MM) | WEAN #107316-049-00 #107316-026-00 | 14" DIA ROLLS (355 MM) | 20 HP MOTOR FOR BOTTOM ROLL 850/2400 RPM, 25:1 |
| 80" WIDE (2032 MM) | WEAN #107306-007-00 | 14" DIA ROLLS (355 MM) | (2) 10 HP MOTORS 300/1200 RPM, 4.4:1 |
| 80" WIDE (2032 MM) | WEAN #107306-003-00 | 14" DIA ROLLS (355 MM) | (2) 15 HP MOTORS 500/1800 RPM, 4.4:1 |

SHEET LIFTERS

| | | |
|---------------------------|---------------------------|---|
| 33,000 LBS (15,000 KG) | 70/125" (1778/3175 MM) | BUSHMAN (4) #10342-000-00 TO 103345-00-00 |
|---------------------------|---------------------------|---|

SIDE GUIDES

| | |
|-----------------------------------|------------------------------|
| 22" TO 84" (550 MM TO 2100 MM) | WEAN/MCKAY #107519-000-00 |
| 20" to 80" (500 MM TO 2000 MM) | WEAN (2) #107316-024-00 |

REELS (ENTRY)

| | | |
|---|---------------|---------------------------|
| 37" X 0.080" (925 MM X 2 MM) 15,000 LBS (6,800 KG) | PROD. MACH | MANDREL #107293-000-00 |
| 44" x 0.015" (1100 MM X .375) 30,000 LBS (13,600 KG) | WEAN | MANDREL #107357-000-00 |
| 50" X 0.125" (1250 MM X 3.12 MM) 25,000 LBS (11,340 KG) | HERR VOSS | STUB #107299-000-00 |
| 80 X 0.250" (2000 MM X 6.25 MM) 19,000 LBS (8,620 KG) | HUNTER | MANDREL #107344-000-00 |

SIDE TRIMMERS

| | | |
|--------------------------------------|------------------------------|----------------------------|
| 54" X 0.015" (1370 MM X .375 MM) | WEAN #107492-000-00 | KNIFE: 12" DIA (300 MM) |
| 54" X 0.375" (1370 MM X 9.53 MM) | STAMCO #107490-000-00 | KNIFE: 24" DIA (610 MM) |
| 74" X 0.125" (1850 MM X 3.12 MM) | WEAN #107642-000-00 | KNIFE: 12" DIA (300 MM) |
| 98" X 0.250" (2450 MM X 6.25 MM) | BLAWKNOX #107641-000-00 | KNIFE: 16" DIA (400 MM) |
| 102" X 0.5" (2550 MM X 12.5 MM) | SCHLOEMANN #107406-000-00 | KNIFE: 31" DIA (787 MM) |
| 130" X 0.25" (3250 MM X 6.25 MM) | UNITED #107625-000-00 | KNIFE: 24" DIA (610 MM) |
| 134" X 0.398" (3350 MM X 9.95 MM) | WEAN #107620-000-00 | KNIFE: 24" DIA (610 MM) |

REELS (EXIT)

| | |
|---|--|
| 47" X 0.015" (1175 MM X .375 MM) 36,000 LBS (16,330 KG) | WEAN #107489-000-00 #107488-000-00 |
| 50" X 0.125" (1250 MM X 3.125 MM) 33,000 LBS (14,970 KG) | STAMCO #107348-000-00 #107349-000-00 |
| 50 X 0.250" (1250 MM X 6.25 MM) 40,000 LBS (18,145 KG) | BLISS #104310-000-00 |
| 54" X 0.220" (1350 MM X 5.5 MM) 60,000 LBS (27,215 KG) | BLAWKNOX #107341-000-00 |
| 60" X 0.178" (1500 MM X 4.45 MM) 42,000 LBS (19,050 KG) | UNITED #107379-000-00 |
| 80" X 0.25" (2000 MM X 6.25 MM) 19,000 LBS (8,620 KG) | HUNTER #107345-000-00 |

SHEET STACKER

OCTAGON 18" (457 MM) STACK HEIGHT
SHEET 60" W X 144" L (254 TO 1524 MM)

111177-000-00

WELDERS

44" X 0.074"
(1100 X 1.85 MM)

TAYLOR WINFIELD
#107354-000-00

**DON'T SEE WHAT YOU'RE LOOKING FOR?
CASEY HAS THOUSANDS OF ITEMS IN STOCK
CALL US AT (412) 963-1111 • www.caseyusa.com**